

INMATEH -

**AGRICULTURAL
ENGINEERING**

JANUARY - APRIL

No liability is assumed by the editorial staff for the content of scientific papers and opinions published in this volume. They represent the author's point of view

Editorial

The National Institute of Research-Development for Machines and Installations designed to Agriculture and Food Industry - INMA Bucharest has the oldest and most prestigious research activity in the field of agricultural machinery and mechanizing technologies in Romania.

Short History

- ✓ *In 1927, the first research Center for Agricultural Machinery in Agricultural Research Institute of Romania - ICAR (Establishing Law was published in O.D. no. 97/05.05.1927) was established;*
- ✓ *In 1930, was founded The Testing Department of Agricultural Machinery and Tools by transforming Agricultural Research Centre of ICAR- that founded the science of methodologies and experimental techniques in the field (Decision no. 2000/1930 of ICAR, Manager - GHEORGHE IONESCU ȘIȘEȘTI);*
- ✓ *In 1952, was established the Research Institute for Mechanization and Electrification of Agriculture - ICMA Băneasa, by transforming the Department of Agricultural Machines and Tools Testing;*
- ✓ *In 1979, the Research Institute of Scientific and Technological Engineering for Agricultural Machinery and Tools - ICSITMUA was founded - subordinated to Ministry of Machine Building Industry - MICM, by unifying ICMA subordinated to MAA with ICPMA subordinated to MICM;*
- ✓ *In 1996 the National Institute of Research-Development for Machines and Installations designed to Agriculture and Food Industry - INMA was founded - according to G.D. no.1308/25.11.1996, by reorganizing ICSITMUA, G.D no. 1308/1996 coordinated by the Ministry of Education and Research G.D. no. 823/2004;*
- ✓ *In 2008 INMA has been accredited to carry out research and developing activities financed from public funds under G.D. no. 551/2007, Decision of the National Authority for Scientific Research - ANCSno. 9634/2008.*

As a result of widening the spectrum of communication, dissemination and implementation of scientific research results, in 2000 was founded the institute magazine, issued under the name of SCIENTIFIC PAPERS (INMATEH), ISSN 1583 – 1019.

*Starting with volume 30, no. 1/2010, the magazine changed its name to INMATEH - *Agricultural Engineering*, appearing both in print format (ISSN 2068 - 4215), and online (ISSN online: 2068 - 2239). The magazine is bilingual, abstract being published in native language and English, with a rhythm of three issues / year: January-April, May-August, September-December and is recognized by CNCSIS – with B⁺ category. Published articles are from the field of AGRICULTURAL ENGINEERING: technologies and technical equipment for agriculture and food industry, renewable energy, machinery testing, environment, transport in agriculture etc. and are evaluated by specialists inside the country and abroad, in mentioned domains.*

*Technical level and performance processes, technology and machinery for agriculture and food industry increasing, according to national requirements and European and international regulations, as well as exploitation of renewable resources in terms of efficiency, life, health and environment protection represent referential elements for the magazine „INMATEH - *Agricultural Engineering*”.*

We are thankful to all readers, publishers and assessors.

Editor in chief,

Ph. D. Eng. Vladut Nicolae-Valentin

Managing Editorial Board - INMA Bucharest**Editor in Chief****VLADUȚ Nicolae-Valentin**

Ph.D.Eng, SR I

E-mail: inmatehjournal@gmail.com**Executive Editor****POPA Lucreția**

Ph.D.Eng, SR I

Assistant Editor**MATACHE Mihai-Gabriel**

Ph.D.Eng, SR I

Logistic support, database**MURARU Virgil, Ph.D.Eng, SR I****ȚICU Tania, techn.****Scientific Secretary****Cârdei Petre, math.****Official translators****RADU Daniela-Cristina, English, French****Editorial Board**

- Acad. Prof. Ph.D. TABĂRA Valeriu - Romania, President of ASAS - Academy of Agricultural and Forestry Sciences "Gheorghe Ionescu Șişești";
- Ph.D. BOGOESCU Marian - Romania, Vicepresident of ASAS - Academy of Agricultural and Forestry Sciences "Gheorghe Ionescu Șişești";
- Hon.Prof.Ph.D.Eng. PIRNA Ion - Romania, President of the Department of Agricultural Mechanization of ASAS - Academy of Agricultural and Forestry Sciences "Gheorghe Ionescu Șişești";
- Ph.D. Eng. NICOLESCU C. Mihai - Romania, Scientific General Secretary of the ASAS-Academy of Agricultural and Forestry Sciences "Gheorghe Ionescu Șişești";
- Assoc.Prof. Ph.D. Eng. BELC Nastasia - Romania, IBA Bucharest;
- Ph.D. Eng. BUȚU Alina - Romania, INSB Bucharest;
- Prof. Ph.D. Eng. PARASCHIV Gigel - Romania, P.U. Bucharest;
- Prof. Ph.D.Eng. BIRIȘ Sorin - Romania, P.U. Bucharest;
- Prof. Ph.D. Eng. VLASE Sorin - Romania, "Transilvania" University Brașov;
- Prof. Ph.D.Eng. BURNETE Nicolae - Romania, Technical University Cluj Napoca;
- Prof. Ph.D. Eng. FILIP Nicolae - Romania, Technical University Cluj Napoca;
- Prof. Ph.D. Eng. VOICU Gheorghe - Romania, P.U. Bucharest;
- Prof. Ph.D. Eng. GERGEN Iosif -Romania,USAMVB Timișoara;
- Prof. Ph.D. Eng. ȚENU Ioan - Romania, USAMV Iași;
- Assoc.Prof.Ph.D.Eng. BUNGESCU Sorin - Romania, USAMVB Timișoara;
- Prof. Ph.D.Eng. FENYVESI László - Hungary, Hungarian Institute of Agricultural Engineering Godolo;
- Assist.Prof.Ph.D.Eng. BILANDZIJA Nikola - Croatia, University of Zagreb;
- Ph.D. BIOCCA Marcello - Italy Agricultural Research Council, Agricultural Engineering Research Unit;
- Prof.Ph.D.Eng. MIHAILOV Nikolay - Bulgaria, University of Rousse;
- Assoc.Prof.Ph.D.Eng. ATANASOV At. - Bulgaria, University of Rousse;
- Assoc.Prof. Ph.D. ERTEKIN Can - Turkey, Akdeniz University Antalya;
- Prof. Ph.D.Sc. Eng. VARTUKAPTEINIS Kaspars - Latvia, Latvia University of Agriculture, Institute of Agricultural Machinery;
- ir. HUYGHEBAERT Bruno - Belgium, Walloon Agricultural Research Center CRA-W;
- Prof.Ph.D. Eng. FABBRO Dal Inacio Maria - Brazil, Campinas State University;
- Prof. Ph.D. Eng. DE WRACHIEN Daniele - Italy, State University of Milan;
- Prof. Ph.D.Guanxin YAO - P.R.China, Along Agriculture R&DTechnology and Management Consulting Co., Ltd;
- Prof. Ph.D. Eng. GONZÁLEZ Omar - Republic of Cuba, Central University "Marta Abreu" de las Villas;
- Assist. Prof.Dr. KABAŞ Önder –Turkey, Akdeniz University.
- Asist.Prof.Dr. SELVİ Kemal Çağatay - Turkey, Ondokuz Mayıs University.

In the present, *INMATEH - Agricultural Engineering* journal is indexed in the next international databases:
 ELSEVIER /SciVerse SCOPUS, CLARIVATE ANALYTICS' WEB OF SCIENCE- Emerging Sources Citation Index (ESCI),
 ULRICHS Web: Global Serials Directory, CABI, SCPIO, Index COPERNICUS International,
 EBSCO Publishing, Elektronische Zeitschriftenbibliothek

INMATEH - Agricultural Engineering**vol. 57, no.1 / 2019**

NATIONAL INSTITUTE OF RESEARCH-DEVELOPMENT FOR MACHINES AND
 INSTALLATIONS DESIGNED TO AGRICULTURE AND FOOD INDUSTRY -
 INMA Bucharest

6 Ion Ionescu de la Brad Blvd., sector 1, Bucharest

Three issues per year,
 e-ISSN: 2068 – 2239
 p ISSN: 2068 – 4215

Edited by: INMA Bucharest

Copyright: INMA Bucharest / Romania

CONTENT

	Page(s)
1. RESULTS OF LABORATORY INVESTIGATIONS OF SOIL SCREENING ABILITY OF A CHAIN DIGGER WITH ASYMMETRIC VIBRATOR ARRANGEMENT / РЕЗУЛЬТАТЫ ЛАБОРАТОРНЫХ ИССЛЕДОВАНИЙ ПРОСЕВАЕМОСТИ ПОЧВЫ НА ПРУТКОВОМ ЭЛЕВАТОРЕ С АСИММЕТРИЧНЫМ РАСПОЛОЖЕНИЕМ ВСТРЯХИВАТЕЛЕЙ PhD. Eng. Sc. Sibirev A.V., PhD. Eng. Sc. Aksenov A.G., Prof. PhD. Eng. Sc. Dorokhov. A.S. FSBSI "Federal Scientific Agronomic and Engineering Centre VIM"/ Russia	9
2. INFLUENCE OF TYPES OF TRACTOR RUNNING GEARS ON THE VALUE OF HOP GARDEN ROW SPACING COMPACTION / ВЛИЯНИЕ ТИПОВ ДВИЖИТЕЛЕЙ ТРАКТОРОВ НА ВЕЛИЧИНУ УПЛОТНЕНИЯ ПОЧВЫ В МЕЖДУРЯДЬЯХ ХМЕЛЬНИКОВ As. PhD. Eng. Smirnov P.A. ¹⁾ , As. PhD. Ec. Makushev A.E. ¹⁾ , Prof. Ph.D. Eng. Kazakov Y. F. ¹⁾ , Prof. Ph.D. Eng. Medvedev V.I. ¹⁾ , As. PhD.Eng. Vasilyev A.O. ¹⁾ , As. PhD. Eng. Andreev R.V. ¹⁾ ¹⁾ Chuvash State Agricultural Academy / Russia	19
3. THE OPTIMAL CHOICE OF THE CHARACTERISTIC WAVELENGTHS IN SPECTRAL IMAGING FOR CUCUMBER DOWNY MILDEW / 黄瓜霜霉病光谱图像特征波长优化选取 As. Prof. PhD.Eng. Geng C.X. ¹⁾ , Ms. Stud. Eng. Wang P. ¹⁾ , As. Prof. PhD.Eng. Qin P.L. ²⁾ , Eng. Zhang W.B. ³⁾ , As. Prof. PhD.Eng. Wang P.B. ¹⁾ ¹⁾ Robotics and Microsystems Centre, Soochow University, Suzhou/China; ²⁾ Wisdom Agriculture College, Suzhou Polytechnic Institute of Agriculture, Suzhou/China; ³⁾ Suzhou Agricultural Machinery Technology Promotion Station, Suzhou/China	29
4. RESEARCH ON THE BLOCK-PORION SEPARATOR PARAMETERS INFLUENCE ON THE ADJUSTMENT RANGE OF OPERATING ELEMENTS SPEED / ДОСЛІДЖЕННЯ ВПЛИВУ ПАРАМЕТРІВ СИСТЕМИ ГІДРОПРИВОДІВ БЛОЧНО-ПОРЦІЙНОГО ВІДОКРЕМЛЮВАЧА НА ДІАПАЗОН РЕГУЛЮВАННЯ ШВИДКОСТІ РОБОЧИХ ОРГАНІВ Ph.D. Ivanov M.I. ¹⁾ , Ph.D. Rutkevych V.S. ¹⁾ , Ph.D. Kolisnyk O.M. ¹⁾ , Ph.D. Lisovoy I.O. ²⁾ ¹⁾ Vinnitsia National Agrarian University / Ukraine; ²⁾ Uman National University of Horticulture	37
5. EVALUATION OF IMPACT SYSTEMS NOISE LEVEL IN GRAIN PRODUCTION / ОЦЕНКА УРОВНЯ ШУМА УДАРНЫХ СИСТЕМ В ЗЕРНОПРОИЗВОДСТВЕ Prof. Dr. Eng.Sc. Rodimtsev S.A., Prof. Dr. Eng.Sc. Kuznetsov Y.A., Prof. Dr. Eng.Sc.Kolomeichenko A.V., Assoc. Prof., PhD Eng. Sc. Goncharenko V.V., Senior Lecturer Patrín E.I., PhD. Phil. Sc., Assoc. Prof. Mikhaylova Y.L. Orel State Agrarian University named after N.V. Parakhin / Russia	45
6. MATHEMATICAL MODELING AND NUMERICAL SIMULATION OF THE DRYING PROCESS OF SEEDS IN A PILOT PLANT / MODELAREA MATEMATICĂ ȘI SIMULAREA NUMERICĂ A PROCESULUI DE USCARE A SEMINTELOR ÎNTR-O INSTALAȚIE PILOT Assist. Ph.D. Eng. Arsenoia V.N.* ¹⁾ , Ph.D. Eng. Vlăduț V. ²⁾ , Prof. Ph.D. Eng. Țenu I. ¹⁾ , Ph.D. Eng. Vocea I. ²⁾ , Lecturer Ph.D.Eng. Moiceanu G. ³⁾ , Assoc. Prof. Ph.D. Eng. Cârlescu P. M. ¹⁾ ¹⁾ University of Agricultural Sciences and Veterinary Medicine Iași / Romania; ²⁾ INMA Bucharest / Romania; ³⁾ Politehnica University of Bucharest / Romania	55
7. THE INFLUENCE OF BASIC PARAMETERS OF SEPARATING CONVEYOR OPERATION ON GRAIN CLEANING QUALITY / ВПЛИВ ОСНОВНИХ ПАРАМЕТРІВ РОБОТИ ТРАНСПОРТЕРА-СЕПАРАТОРА НА ЯКІСТЬ ОЧИЩЕННЯ ЗЕРНА Prof. Ph.D. Eng. Vasytkovskiy Oleksii ¹⁾ , Lect. Ph.D. Eng. Vasytkovska Kateryna ¹⁾ , Lect. Ph.D. Eng. Moroz Serhii ¹⁾ , Prof. Dr. Eng. Sc. Sviren Mykola ¹⁾ , Dr. Agric. Sc. Storozhyk Larysa ²⁾ ¹⁾ Central Ukrainian National Technical University / Ukraine; ²⁾ Institute of Bioenergy Crops and Sugar Beet National Academy of Agricultural Sciences of Ukraine / Ukraine	63
8. DESIGN AND RESEARCH OF AUTOMATIC ALIGNMENT TEST DEVICE OF SEMI-FEEDING PEANUT COMBINE HARVESTER <i>半喂入式花生联合收获机自动对行试验装置的设计与研究</i> Prof. Ph.D. Eng. Lv X.L. ^{1,3)} , R. Ph.D. Eng. Hu Z.L. ^{*2)} , R.A.M.S. Eng. Wang S.Y. ²⁾ , R.A.M.S. Eng. Yu Z.Y. ²⁾ ¹⁾ Ministry of Agriculture, Key Laboratory of Modern Agricultural Equipment/China ²⁾ Ministry of Agriculture, Nanjing Research Institute for Agricultural Mechanization / China; ³⁾ Chuzhou University, College of Machinery and Automotive Engineering/China	71
9. DETERMINATION OF ROLLING RADIUS OF SELF-PROPELLED MACHINES' WHEELS / ВИЗНАЧЕННЯ ДІЙСНОГО РАДІУСУ КОЧЕННЯ ТА ОЦІНКА КОВЗАННЯ КОЛІС САМОХІДНИХ МАШИН Prof. PhD.Eng. Golub G.A., Ph.D. Eng. Chuba V.V., Ph.D. Eng. Marus O.A. National University of Life and Environmental Sciences of Ukraine, Kyiv / Ukraine	81

		Page(s)
10.	<p>MATHEMATICAL MODEL FOR THE EVOLUTION OF <i>Chlorella Algae</i> / MODEL MATEMATIC PENTRU EVOLUȚIA ALGELOR CHLORELLA Mat. Cârdeș P.¹⁾, Ph.D. Eng. Nedelcu A.¹⁾, Ph.D. Eng. Ciuperca R.¹⁾</p> <p>¹⁾ National Institute of Research-Development for Machines and Installations Designed to Agriculture and Food Industry - INMA Bucharest / Romania</p>	91
11.	<p>PARAMETER OPTIMISATION AND EXPERIMENT ON THE COMBING OF <i>Cerasus humilis</i> / 钙果梳脱部件参数优化与试验 As.Ph D. Stud. Eng. Xiaobin Du, Prof. Ph.D. Eng. Junlin He*, M.S. Stud. Eng. Yongqiang He, M.S. Stud. Eng. Dawei Fang College of Engineering, Shanxi Agriculture University, Taigu / China</p>	103
12.	<p>PHYSICAL PROTECTION IN EXPERIMENTAL RASPBERRY PLANTATION / ФІЗИЧНИЙ ЗАХИСТ В ЕКСПЕРИМЕНТАЛЬНІЙ ПЛАНТАЦІЇ МАЛИНИ Szalay K.¹⁾, Keller B.¹⁾, Kovács L. ¹⁾, Rák R. ¹⁾, Peterfalvi N.¹⁾, Sillinger F. ²⁾, Golub G.³⁾, Kukharets S.⁴⁾, Souček J.⁵⁾, Jung A.²⁾</p> <p>¹⁾NAIK Institute of Agricultural Engineering / Hungary; ²⁾Szent István University / Hungary; ³⁾ National University of Life and Environmental Sciences of Ukraine / Ukraine; ⁴⁾ Zhytomyr National Agroecological University / Ukraine; ⁵⁾ Research Institute of Agricultural Engineering / Czech Republic</p>	115
13.	<p>DETERMINATION OF INTERACTION PARAMETERS AND GRAIN MATERIAL FLOW MOTION ON SCREW CONVEYOR ELASTIC SECTION SURFACE / ВИЗНАЧЕННЯ ПАРАМЕТРІВ ВЗАЄМОДІЇ ТА РУХУ ПОТОКУ ЗЕРНОВОГО МАТЕРІАЛУ ПО ПОВЕРХНІ ЕЛАСТИЧНОЇ СЕКЦІЇ ШНЕКА Prof. DSc. Eng. Hevko R.B.¹⁾, Ph.D. Eng. Zalutskyi S.Z.²⁾, Assoc. Prof. Ph.D. Eng. Hladyo Y.B.²⁾, Assoc. Prof. Ph.D. Eng. Tkachenko I.G.²⁾, Prof. DSc. Eng. Lyashuk O.L.²⁾, Prof. DSc. Econ. Pavlova O.M.³⁾, Prof. DSc. Econ. Pohrishchuk B.V.¹⁾, Assoc. Prof. Ph.D. Eng. Trokhaniak O.M.⁴⁾, Assoc. Prof. Ph.D. Econ. Dobizha N.V.¹⁾ Ternopil National Economical University / Ukraine; ²⁾Ternopil Ivan Puluj National Technical University / Ukraine; ³⁾Lesya Ukrainka Eastern European National University / Ukraine; ⁴⁾National University of Life and Environmental Sciences of Ukraine / Ukraine</p>	123
14.	<p>DETERMINING THE PARAMETERS OF THE DEVICE FOR INERTIAL REMOVAL OF EXCESS SEED / ВИЗНАЧЕННЯ ПАРАМЕТРІВ ПРИСТРОЮ ДЛЯ ІНЕРЦІЙНОГО ВИДАЛЕННЯ ЗАЙВОГО НАСІННЯ Lect. Ph.D. Eng. Vasylykivska K.V.¹⁾, Prof. Ph.D. Eng. Vasylykovskiy O.M.¹⁾, Prof. Dr. Eng. Sc. Sviren M.O. ¹⁾, Lect. Ph.D. Eng. Petrenko D.I.¹⁾, Prof. Dr. Eng. Sc. Moroz M.M. ²⁾</p> <p>¹⁾ Central Ukrainian National Technical University / Ukraine; ²⁾ Kremenchuk Mykhailo Ostrohradskiy National University / Ukraine</p>	135
15.	<p>EXPERIMENTAL STUDIES ON DRYING CONDITIONS OF GRAIN CROPS WITH HIGH MOISTURE CONTENT IN LOW-PRESSURE ENVIRONMENT / ЕКСПЕРИМЕНТАЛЬНІ ДОСЛІДЖЕННЯ РЕЖИМІВ СУШІННЯ НАСІННЯ ЗЕРНОВИХ КУЛЬТУР ІЗ ВИСОКОЮ ВОЛОГІСТЮ В СЕРЕДОВИЩІ НИЗЬКОГО ТИСКУ Prof. Ph.D. Eng. Rogovskii I.L.¹⁾, Senior lecturer Ph.D. Eng. Titova L.L.¹⁾, Senior lecturer Ph.D. Eng. Trokhaniak V.I.¹⁾, Assoc. Prof. Ph.D. Eng. Solomka O.V.¹⁾, Senior lecturer Ph.D.Eng. Popyk P.S.¹⁾, Ph.D. Eng. Shvidia V.O.²⁾, Ph.D.Eng. Stepanenko S.P.²⁾</p> <p>¹⁾ National University of Life and Environmental Sciences of Ukraine; ²⁾ National Scientific Centre "Institute of Mechanization and Electrification of Agriculture" / Ukraine</p>	141
16.	<p>IMPROVED REMOTE-CONTROL WIRELESS SENSING SYSTEM OF PLANT GROWTH FACTORS IN GREENHOUSE ENVIRONMENT / 远程控制型温室环境植物生长要素无线检测系统 Ph.D. Bin Li¹⁾, Stud. Yuqi Zhang¹⁾, Ph.D. Ying-Nan Kan¹⁾, Prof. Yao-Dan Chi¹⁾, Prof. Xiaotian Yang¹⁾, Ph.D. Jianing Wang²⁾, Prof. Yiding Wang²⁾</p> <p>¹⁾ Institute of Electrical & Computer, Jilin Jianzhu University, Changchun 130012, P.R. China; ²⁾ State Key Laboratory on Integrated Optoelectronics, College of Electronic Science and Engineering, Jilin University</p>	147
17.	<p>RESEARCH OF QUALITY INDICATORS OF WHEAT SEEDS SEPARATED BY PRE-THRESHING DEVICE / ДОСЛІДЖЕННЯ ПОКАЗНИКІВ ЯКОСТІ НАСІННЯ ПШЕНИЦІ ВІДДІЛЕНОГО ПРИСТРОЄМ ПОПЕРЕДНЬОГО ОБМОЛТУ ЗЕРНА Doctor of technical sciences Sheychenko V.O. ¹⁾, Ph.D. Kuzmych A.Ya. ²⁾, Postgraduate Shevchuk M.V. ²⁾, Ph.D. Shevchuk V.V. ³⁾, Ph.D. Belovod O.I. ¹⁾</p> <p>¹⁾ Poltava State Agrarian Academy / Ukraine; ²⁾ National Scientific Centre "Institute of Agriculture Engineering and Electrification" / Ukraine; ³⁾ Uman National University of Horticulture / Ukraine</p>	157
18.	<p>DESIGN AND CONSTRUCTION OF CHOPPER MACHINE AE02-TYPE FOR OIL PALM FROND / RANCANG BANGUN DAN KONSTRUKSI MESIN PENCACAH TIPE-AE02 UNTUK PELEPAH SAWIT Ph.D. Eng. Ramayanty Bulan¹⁾, Ph.D. Eng. Safrizal¹⁾, Ph.D. Eng. Muhammad Yasar¹⁾, M.Eng. Yudi Nata²⁾, M.Sc. Agustami Sitorus²⁾</p> <p>¹⁾ Department of Agriculture Engineering, Faculty of Agriculture, Syiah Kuala University / Indonesia ²⁾ Department of Mechanical Engineering, Faculty of Engineering, Nusa Putra University / Indonesia</p>	165

		Page(s)
19.	<p>EXPERIMENTAL RESEARCH OF MISCANTHUS PLANTING TECHNOLOGICAL PROCESS BY MEANS OF UPGRADED POTATO PLANTER / ЕКСПЕРИМЕНТАЛЬНЕ ДОСЛІДЖЕННЯ ТЕХНОЛОГІЧНОГО ПРОЦЕСУ САДІННЯ МІСКАНТУСА ЗА ДОПОМОГОЮ КАРТОПЛЕСАДЖАЛКИ Prof. PhD. Adamchuk V. ¹⁾, Prof. PhD. Bulgakov V. ²⁾, PhD. Ivanovs S. ³⁾, PhD. Prsyazhnyi V. ¹⁾, PhD. Boris A. ²⁾ ¹⁾ National Scientific Center "Institute for Agricultural Engineering and Electrification" NAAS of Ukraine, ²⁾ National University of Life and Environmental Sciences of Ukraine / Ukraine ³⁾ Latvia University of Life Sciences and Technologies / Latvia</p>	173
20.	<p>SUBSTANTIATION OF MOTION PARAMETERS OF THE SUBSTRATE PARTICLES IN THE ROTATING DIGESTERS / ОБҐРУНТУВАННЯ ПАРАМЕТРІВ РУХУ ЧАСТИНОК СУБСТРАТУ В МЕТАНТЕНКАХ, ЩО ОБЕРТАЮТЬСЯ Prof. Doctor of Engineering Golub G.A. ¹⁾, Prof. Doctor of Economics Skydan O.V. ²⁾, Doctor of Engineering Kukharets S.M. ²⁾, Ph.D. Eng. Marus O.A. ¹⁾ ¹⁾ National University of Life and Environmental Sciences of Ukraine / Ukraine, ²⁾ Zhytomyr National Agroecological University / Ukraine</p>	179
21.	<p>THE EFFECT OF MASS FLOW RATE OF WHEAT SOLID PARTICLES ON CHARACTERISTICS OF ACOUSTIC SIGNALS IN PNEUMATIC CONVEYING / اثر دبی جرمی ذرات جامد گندم در انتقال نیوماتیکی بر ویژگی‌های سیگنال‌های صوتی Ph.D. Stud. Mehdi Samadi ¹⁾, As Prof. Vahid Rostampour ^{*1)}, Prof. Shamsollah Abdollahpour ²⁾ ¹⁾ Urmia University, Dep. of Mechanical Engineering / Iran; ²⁾ Tabriz University, Dep. of Mechanical Engineering / Iran</p>	187
22.	<p>NECESSITY AND POSSIBLE APPROACHES TO APPLYING DEEP LOOSENING WHEN CULTIVATING RICE / НЕОБХІДНІСТЬ ТА МОЖЛИВІ ПІДХОДИ ДО ЗАСТОСУВАННЯ ГЛИБОКОГО РОЗПУШЕННЯ ПРИ ВИРОЩУВАННІ РИСУ Ph.D. Eng. Lukianchuk O.P. ¹⁾, Prof. Ph.D. Eng. Turcheniuk V.O. ¹⁾, Ph.D. Eng. Prykhodko N.V. ¹⁾, Ph.D. Eng., Volk P.P. ¹⁾, Prof. Ph.D. Eng. Rokochinskiy A.M. ¹⁾, ¹⁾ National University of Water and Environmental Engineering, Rivne / Ukraine</p>	199
23.	<p>INNOVATIVE TECHNOLOGIES OF OILSEED FLAX STRAW MECHANICAL PROCESSING AND QUALITY OF OBTAINED FIBERS / ІННОВАЦІЙНІ ТЕХНОЛОГІЇ МЕХАНІЧНОЇ ПЕРЕРОБКИ СТЕБЕЛ ЛЬОНУ ОЛІЙНОГО ТА ЯКІСТЬ ОДЕРЖАНИХ ВОЛОКОН Prof. Ph.D. Eng. Chursina L. ¹⁾, Prof. Ph.D. Eng. Tikhosova H. ¹⁾, Ph.D. Assoc. prof. Holovenko T. ²⁾, PhD. Assoc. prof. Shovkomud O. ²⁾, PhD. deputy director Kniaziev O. ³⁾, Ph.D., Assoc. prof. Yanyuk T. ⁴⁾ ¹⁾ Kherson National Technical University / Ukraine; ²⁾ Lutsk National Technical University / Ukraine; ³⁾ State enterprise «Research farm «Askaniysky» Askaniyskaya state agricultural research station of the Institute of Irrigated Agriculture of the National Academy of Agrarian Sciences of Ukraine, Kherson / Ukraine; ⁴⁾ National University of Food Technologies, Educational and Scientific Institute of Food Technologies, Kiev / Ukraine</p>	207
24.	<p>FOREST GLOBAL POSITIONING METHOD AND EXPERIMENT BASED ON AGRICULTURAL MACHINERY / 基于农业机械的林木全球定位方法与试验 As. PG. Stud Shuo Li ^{1), 2)}, A.P. Ruili Song ³⁾, Prof. Feng Kang ^{*1), 2)}, Dr. Yaxiong Wang ^{1), 2)} ¹⁾ School of Technology, Beijing Forestry University, Beijing / China; ²⁾ Key Lab of State Forestry and Grassland Administration on Forestry Equipment and Automation, School of Technology, Beijing Forestry University, Beijing / China; ³⁾ Computer Science Department, Hebei Professional College of Political Science and Law, Shijiazhuang / China</p>	215
25.	<p>3D SURFACE DEFECTS RECOGNITION OF LUMBER AND STRAW-BASED PANELS BASED ON STRUCTURE LASER SENSOR SCANNING TECHNOLOGY / 基于结构激光传感器扫描技术的木材和秸秆人造板三维表面缺陷识别 As. Ph.D. Stud Jianhua Yang ^{1), 2)}, Master Stud Xinyu Zheng ¹⁾, Master Stud Jianping Yao ¹⁾ Prof. Ph.D Jiang Xiao ^{*1)}, Associate Prof. Ph.D Lei Yan ¹⁾ ¹⁾ Beijing Forestry University, Beijing, 100083 / China; ²⁾ Beijing Forestry Machinery Research Institute of the National Forestry and Grassland Administration, Beijing / China</p>	225
26.	<p>RESEARCH ON SUNFLOWER SEEDS DRYING PROCESS IN A MONOLAYER TRAY VIBRATION DRYER BASED ON INFRARED RADIATION / ДОСЛІДЖЕННЯ ПРОЦЕСУ СУШІННЯ ЗЕРНА СОНЯШНИКУ У МОНОШАРОВІЙ ЛОТКОВІЙ ВІБРОСУШАРЦІ НА ОСНОВІ ІНФРАЧЕРВОНОГО ОПРОМІНЕННЯ Prof. PhD. Bandura V., Lect. Ph.D. Mazur V., Lect. Ph.D. Yaroshenko L., Lect. Ph.D. Rubanenko O. Vinnytsia National Agrarian University/Ukraine</p>	233
27.	<p>DESIGN AND EXPERIMENTAL OPTIMIZATION OF CLEANING SYSTEM FOR PEANUT HARVESTER 捡拾花生收获机清选系统的设计与试验优化 Ph.D. Eng. Wang Shengsheng ^{1,2)}, Prof. Ph.D. Eng. Ji Jiangtao ^{1,2)}, Prof. Ph.D. Eng. Jin Xin ^{1,2)}, Prof. Ph.D. Eng. Geng Lingxin ¹⁾ ¹⁾ Henan University of Science and Technology, College of Agricultural Equipment Engineering / China; ²⁾ Collaborative Innovation Centre of Machinery Equipment Advanced Manufacturing of Henan Province / China</p>	243

		Page(s)
28.	<p>STUDY OF FERTILIZER SPREADER CENTRIFUGAL TYPE UNDER FIELD CONDITIONS / ДОСЛІДЖЕННЯ РОЗКИДАЧА МІНЕРАЛЬНИХ ДОБРІВ ВІДЦЕНТРОВОГО ТИПУ У ПОЛЬОВИХ УМОВАХ</p> <p>Prof. Ph.D. Manag. Kobets A.S.¹⁾, Lect. Ph.D. Eng., Ponomarenko N.A.¹⁾, Lect.. Ph.D. Eng. Kobets O.M.¹⁾, Lect.. Ph.D. Eng. Tesliuk H.V.¹⁾, Prof. Ph.D. Agri.Sci. Kharytonov M.M.¹⁾, Ass. prof. Ph.D. Eng., Yaropud V.M.²⁾ ¹⁾Dnipro State Agrarian and Economics University, Faculty of Agrarian Engineering / Ukraine; ²⁾Vinnitsya National Agrarian University, Faculty of Engineering and Technology/Ukraine</p>	253
29.	<p>MODELLING OF SOIL COMPACTION UNDER HEAVY-DUTY TRACTORS / MODELAREA COMPACTĂRII SOLULUI SUB ACȚIUNEA TRACTOARELOR DE MARE PUTERE</p> <p>Prof. Ph.D. Eng. Biriș S.Șt.¹⁾, Lecturer Ph.D. Eng. Ungureanu N.¹⁾, Ph.D. Stud. Eng. Cujbescu D²⁾ ¹⁾Politehnica University of Bucharest, Faculty of Biotechnical Systems Engineering / Romania; ²⁾INMA Bucharest / Romania</p>	261
30.	<p>DESIGN OF SMALL MULTIFUNCTION HYDRAULIC CHASSIS FOR HILLY REGIONS OF SOUTHWEST CHINA / 西南丘陵山区小型多功能全液压底盘的设计</p> <p>Prof. Ph.D. Eng. Lv Xiaorong¹⁾, Prof. Ph.D. Eng. Zhang Lihua¹⁾, Ph.D. Eng. Lv Xiaolian²⁾, M.A. Stud. Eng. Wang Xiao¹⁾ ¹⁾ Sichuan Agricultural University, College of Machinery & Electronics/China; ²⁾ Ministry of Agriculture, Key Laboratory of Modern Agricultural Equipment/China</p>	271
31.	<p>PECULIARITIES OF WILLOW PRODUCTIVITY FORMATION IN THE FIRST YEAR OF GROWING UNDER MECHANICAL WEED CONTROL / ОСОБЛИВОСТІ ФОРМУВАННЯ ПРОДУКТИВНОСТІ ВЕРБИ ЕНЕРГЕТИЧНОЇ ПЕРШОГО РОКУ ВЕГЕТАЦІЇ ЗА МЕХАНІЧНИХ ПРИЙОМІВ КОНТРОЛЮВАННЯ БУР'ЯНІВ</p> <p>D. Agri.Sci. Fuchylo Ya.¹⁾, Senior res. Ph.D. Makukh Ya.¹⁾, Senior res. Ph.D. Remeniuk S¹⁾, Senior res. Ph.D. Moshkivska S.¹⁾, Prof. Ph.D. Agri.Sci. Kharytonov M.²⁾ ¹⁾Institute of Bioenergy Crops and Sugar Beet NAAS of Ukraine ²⁾Dnipro State Agrarian and Economics University, Faculty of Agrarian Engineering / Ukraine;</p>	279
32.	<p>THERMODYNAMICS OF ANAEROBIC DIGESTION: MECHANISM OF SUPPRESSION ON BIOGAS PRODUCTION DURING ACIDOGENESIS TERMODINAMIKA PADA ANAEROBIK DIGESI: MEKANISME PROSES HAMBATAN PADA PRODUKSI BIOGAS SELAMA FASE ACIDOGENESIS</p> <p>Darwin¹⁾, Ralf Cord-Ruwisch²⁾ ¹⁾ Department of Agricultural Engineering, Syiah Kuala University, Darussalam, Banda Aceh 23111, Indonesia; ²⁾ School of Environmental Engineering, Murdoch University, Perth, Western Australia</p>	287

**RESEARCH ON THE BLOCK-PORCION SEPARATOR PARAMETERS INFLUENCE
ON THE ADJUSTMENT RANGE OF OPERATING ELEMENTS SPEED**

/

**ДОСЛІДЖЕННЯ ВПЛИВУ ПАРАМЕТРІВ СИСТЕМИ ГІДРОПРИВОДІВ БЛОЧНО-
ПОРЦІЙНОГО ВІДОКРЕМЛЮВАЧА НА ДІАПАЗОН РЕГУЛЮВАННЯ ШВИДКОСТІ
РОБОЧИХ ОРГАНІВ**Ph.D. Ivanov M.I.¹⁾, Ph.D. Rutkevych V.S.¹⁾, Ph.D. Kolisnyk O.M.¹⁾, Ph.D. Lisovoy I.O.²⁾¹⁾Vinnytsia National Agrarian University / Ukraine; ²⁾Uman National University of Horticulture
Tel:+380962700443; E-mail: v_rut@ukr.net**Keywords:** hydraulic drive, design, pump, processes, speed**ABSTRACT**

The article focuses on solving the problem of reducing the energy intensity of the separating ensilage fodder process from trench silo with the block-portion method by developing and substantiating the parameters and operating modes of the hydraulic drives system of the block-portion separator. This allows adjusting the operating modes of the cutting mechanism drive and the vertical feed drive of the П-shaped frame. The system allows adjusting the feed of the П-shaped frame in accordance with the change in the cutting effort that makes an effect on the cutting mechanism. As a result, we get stabilization of energy consumption in the process of separating an ensilage fodder block portion if the parameters that determine the cutting process characteristics fluctuate. It was proven that the expansion of the actuating hydro-motors speed adjustment range and, accordingly, the hydraulic drive system responsiveness increase is possible by the appropriate choice of the slide valve parameters. The most effective of the speed range adjustment expansion of the cutting mechanism hydraulic motor and the hydraulic cylinder of the П-shaped frame drive is provided by reducing the width of the slide valve working edges. The influence of the hydraulic system parameters of the ensilage fodder block-portion separator on the speed adjustment range of the operating elements has been studied. The hydraulic drives system parameters which have the greatest influence on the expansion of the hydraulic drives operating modes adjustment range were established. This allows increasing the responsiveness and efficiency of the proposed block-portion separator of ensilage fodder hydraulic drives system by identifying the rational values of these parameters. Recommendations on the design parameters choice are given.

РЕЗЮМЕ

Стаття присвячена розв'язанню проблеми зменшення енергоємності процесу відокремлення консервованих кормів з траншейних сховищ блочно-порційним методом шляхом розробки та обґрунтування параметрів і режимів роботи системи гідравлічних приводів блочно-порційного відокремлювача, яка дозволяє узгодити режими роботи двох приводів – привода різального механізму та привода вертикальної подачі П-подібної рамки. Система передбачає регулювання подачі П-подібної рамки відповідно зміни зусилля різання, яке діє на різальний механізм, в результаті чого відбувається стабілізація енерговитрат на відокремлення блок-порції консервованого корму при умові коливання параметрів, які визначають характеристики процесу різання. Встановлено, що розширення діапазону регулювання швидкостей виконавчих гідродвигунів та, відповідно підвищення чутливості системи гідроприводів можливе шляхом відповідного вибору параметрів золотникового роздільника. Найбільш ефективно розширення діапазону регулювання швидкостей гідромотора різального механізму та гідроциліндра привода П-подібної рамки забезпечується шляхом зменшення ширини робочих кромek золотника. Досліджено вплив параметрів системи гідроприводів блочно-порційного відокремлювача консервованого корму на діапазон регулювання швидкості робочих органів. Встановлено параметри системи гідроприводів, що мають найбільший вплив на розширення діапазону регулювання режимів роботи системи гідроприводів, що дозволяє шляхом визначення раціональних значень даних параметрів підвищити чутливість та ефективність запропонованої системи гідроприводів блочно-порційного відокремлювача консервованих кормів. Дано рекомендації з вибору конструктивних параметрів.

INTRODUCTION

Recent development of agricultural machinery involves further increase in hydraulic drives operating elements development level. They are aimed at increasing their productivity, power, as well as reducing energy consumption and improving dynamic characteristics (*Andrenko P.N., Lurye Z. Ya., 2016*).

According to the Strategy for the agrarian economic sector development for the period until 2020, the national agricultural machinery must reach a fundamentally new level of development. In order to achieve the set goals it is necessary to solve a number of actual problems. The problems in the engineering industry include the lack of innovative potential and weak development of the Ukrainian agricultural machinery. This results in the increase of the industry dependence on technologies and equipment import (*Privalov F.I., 2017*). A significant increase in the number of hydraulic developments for the machines and equipment is the trend in modern agricultural machinery. The hydraulic drive is demanded to carry out several operations simultaneously. It is conditioned by both economic and functional requirements for hydraulic machines and equipment (*Shylo I.N., Tolochko N.K., Romanyuk N.N., Nukeshev S.O., 2016*). There are many machines and technological equipment such as harvesters, loaders, manipulators. Their work mainly requires simultaneous operation of several operating elements. Besides, such systems always require precise speed control adjustment during operation, for example, to maintain the assigned kinematics of their movement. The adjustment accuracy should be ensured even under variable loadings on the operating elements (*Andrenko P.N., Lurye Z. Ya., 2016; Galukhin N.A., 2014*).

Therefore, the research on the influence of the block-portion separator hydraulic drives parameters on the speed range of the operating elements adjustment is an actual scientific problem for the country's agricultural and industrial complex. The solution to the problem will increase the mechanization level in loading and unloading operations, the quality of technological operation while separating fodder and reducing the agricultural products cost price.

The block-portion separators of ensilage fodder which are now used at the Ukrainian enterprises, as well as other national agricultural machines are equipped with hydraulic drives of fixed flow control valve which do not meet modern requirements for speed, reliability and power consumption related to these machines (*Ivanov M.I., Hrytsun A.V., Podolyanyan I.M., Rutkevych V.S., 2010*). The main disadvantages of the drives are significant power losses when it is necessary to perform precise movements or to regulate the flow of hydraulic oil used in operating elements (hydraulic motors). Some unconnected hydraulic motors of the separator's cutting mechanism drive and the hydraulic cylinder of the feeding drives lead to applying hydraulic motors with increased capacity (*Ivanov N., Shargorodskiy S., Rutkevych V., 2013; Ivanov M.I. et al., 2013*). As a result, the power of each of these machine's drives increases to 25 kW under condition of identifying the maximum required power of the cutting mechanism drive within the separator in the range of 4.5-6.0 kW, and the drive of the feeder – up to 0.8 kW by using calculation and experimental method (*Rutkevych V.S., 2017*). That is why the world's leading hydraulic equipment manufacturers from Parker Hannifin, Bosch Rexroth, Bucher Hydraulics, Hunger Hydraulik, Turbo, Moog and others pay much attention to the "intellectual drives" development and the existing drives redesigning and upgrading (*Kozlov L.G., 2013*). As a rule, the main problem that arises in the independent simultaneous adjustment of several operating elements speeds of the hydraulic drive is the energy losses excessive level and unacceptably low efficiency coefficient of the hydraulic system (*Sidorenko V.S. et al., 2017*).

MATERIALS AND METHODS

The experimental part of the work was carried out at the laboratory stands within the "Machinery and equipment for agricultural production" department at Vinnytsia National Agrarian University. The experimental research was intended to prove the development effectiveness of the hydraulic drives system in the block-portion separator of ensilage fodder and the reasonableness in the choice of the determined drive to ensure the compliance of the two drives operation – the cutting mechanism drive and the П-shaped frame vertical feeding drive. During the theoretical studies of the hydraulic drives system in the block-portion separator, recommendations were made for the choice of its parameters. The parameter values should ensure the absence of unstable (oscillatory) processes and the precise operation of the controlled signal by the slide valve for the flow with increasing torque on the hydraulic motor. The adequacy of the theoretical analysis results to the real performance of the developed system in hydraulic drives of the block-portion separator was verified by studying the system operation on an experimental stand. Mathematical modelling results and experimental studies of the physical model comparison make it possible to prove the results reliability.

Theoretical analysis of the processes that determine the characteristics and the quality of the block-portion separator hydraulic drives system was carried applying the mathematical modelling methods, using the fundamental laws of hydraulics, hydromechanics and theoretical mechanics with the use of differential calculus. A numerical experiment based on the mathematical model was performed applying modern software packages Mathcad and Delphi.

For experimental research we used modern measuring and recording equipment. On the basis of the analogue-digital converter of m-DAQ 12 model a recording equipment set was created. That allowed accumulating and processing an array of measurement results. The experimental data processing was performed by regression analysis methods. Algorithmic computing was conducted using modern packages of applications Mathcad 17, Microsoft Excel 2003, Delphi. To simulate the laboratory installation design and the processes under study we used modern software packages SolidWorks, T-Flex. The reliability of the theoretical statements, scientific and practical results presented in the work, was confirmed experimentally under laboratory conditions.

RESULTS

The objective of the study is to set the block-portion separator for ensilage fodder hydraulic drives parameters which will allow expanding the speed adjustment of operating elements range with variable loading.

The system of hydraulic drives in block-portion separator was elaborated within the department of machines and equipment of agricultural production at Vinnytsia National Agrarian University. The system provides the adaptation of actuating hydraulic motors to the technological surface condition (*Rutkevych V.S., 2017*). The schematic diagram of the hydraulic drive system in the block-portion separator for ensilage fodder is shown in Fig. 1.

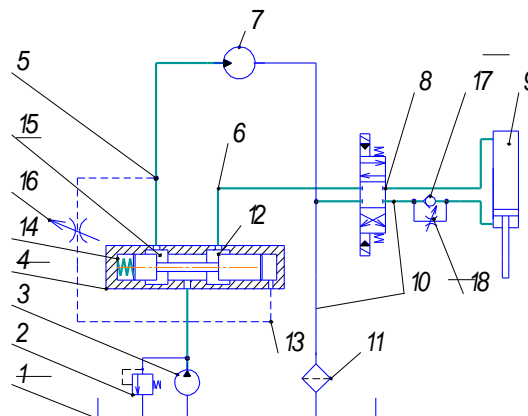


Fig. 1 - Hydraulic circuit in the hydraulic system of a block-portion separator for ensilage fodder

The system operation principle involves adjusting the feeding of the Π -shaped frame according to the changes of the cutting effort that affects the cutting mechanism (*Ivanov M.I. et al., 2013*), which results in the energy consumption stabilization of the ensilage fodder block portion separator under the condition of fluctuating parameters that determine the cutting process characteristics.

The ensilage fodder block-portion separator drives system includes a hydraulic tank 1, a safety valve 2, a hydraulic pump 3, a slide valve separator of the flow 4 with a control line 13, a controlled slide valve 12, a hydraulic motor 7, pressure gauges 5,6, a four-line three-positioned distributor with electrohydraulic control 8, a hydraulic cylinder 9, drain hose lines 10, filter 11, check valve 17, chokes 16,18 and a spring 14 (Fig. 1). The suggested use of the flow divider 4 between the actuating hydraulic motor of the cutting mechanism 7 and the hydraulic feeding cylinder 9 (Fig. 1) allows co-ordinating the reduction of its feeding when the load on the cutting mechanism increases, which in turn, leads to a reduction in the cutting force. At the same time, hydraulic oil supply to the hydraulic motor of cutting mechanism drive increases, which also contributes to the reduction of the cutting force and the required power of the cutting mechanism hydraulic drive.

The study of the operation processes of hydraulic drives system in the ensilage fodder block-portion separator was carried out by means of a computational experiment. As a result of solving the problem on the PC, the transient processes that arise during the operation of the hydraulic system in the block-portion separator for ensilage fodder were determined.

The algorithm for determining transients in the specified system takes into account the variable load on the output elements of the actuating hydro-motors, which is actually the cause of the transient processes.

The operation of hydraulic drives system of ensilage fodder block-portion separator starts at zero load on the actuating hydraulic drives, which in general corresponds to the process of moving the Π -shaped frame to the surface of the ensilage fodder monolith when the load on the output elements of the actuating hydraulic motors is minimal or absent.

At 400 ms from the operation beginning, occurs the increase in the load on the output elements of the actuating hydro-motors to the value that corresponds to the real value of the loading moment on the hydro-motor shaft $M_{gm}=100$ Nm and the force $F_{cutting} = 1200$ N on the hydraulic cylinder rod. In further study of the process of hydraulic drives system operation the moment from the forces of cutting silage monolith and the effort to overcome the resistance strength when feeding the Π -shaped frame corresponded to the value determined experimentally in the study of the block-portion fodder separating process from the silage monolith.

Fig. 2 shows the calculating transient processes (as a result of a numerical experiment) in the hydraulic drive system of the block-portion separator caused by the change of the loading on the drive hydraulic motors actuating segments.

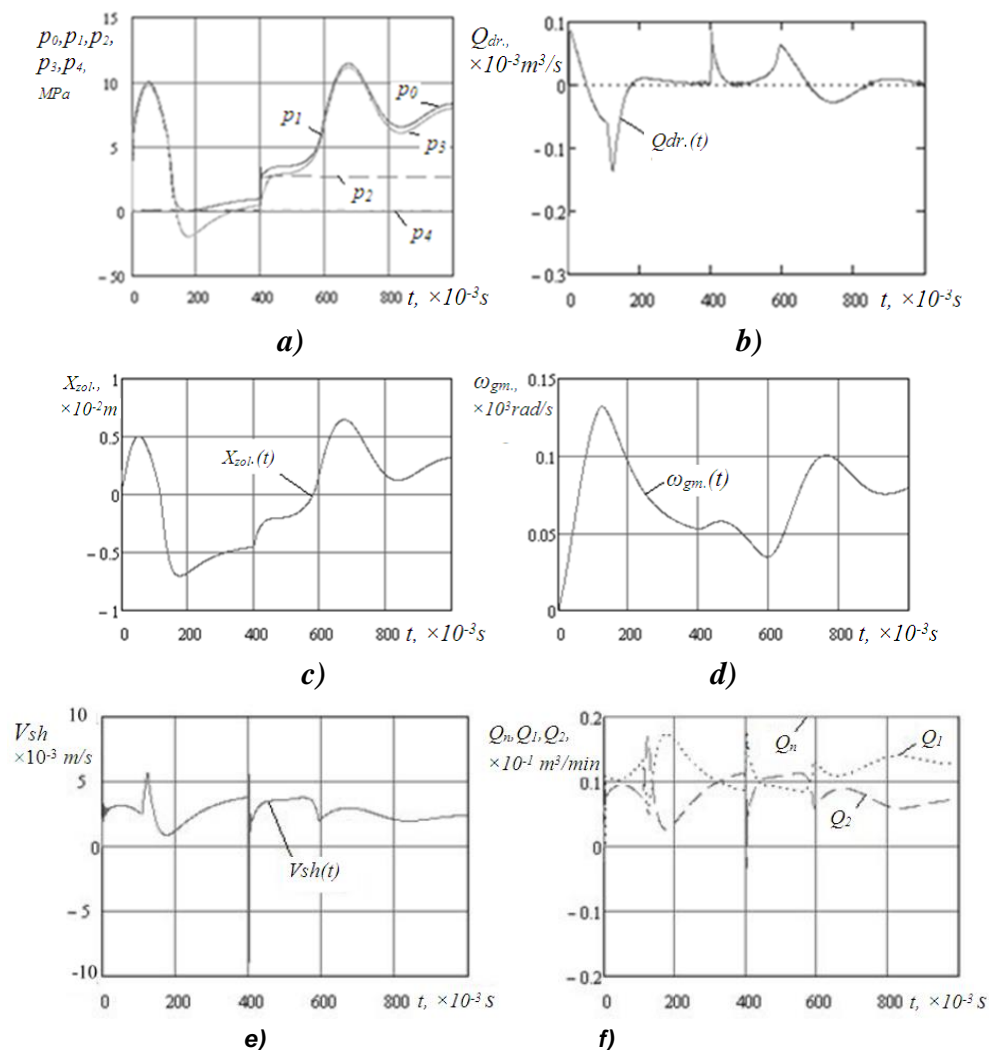


Fig. 2 - Transitional process in the hydraulic drive system of the block-portion separator at initial parameters values

a) change of pressure in the housings of the hydro-system; b) the flow of oil through the throttle; c) the displacement of the slide valve of the flow separator; d) the angular speed of the hydraulic motor shaft; e) the speed of the hydraulic cylinder supply; f) the flow of liquid consumed by the hydraulic motor (Q_1) and the hydraulic cylinder (Q_2).

The transient processes shown in Fig. 2 were calculated at the following initial values of the hydraulic system parameters in the block-portion separator: the volume supply of the pump $Q_n = 2.38 \cdot 10^{-4} m^3/s$, which corresponds to the volumetric supply of a gear pump in the H11-10 type with the power of the pump drive at five kW; the working edges width of the separator slide valve for the flow is

$a=1\text{mm}$; the initial working windows opening value in the slide valve of the flow separator $l_1=6\text{ mm}$, $l_2=2\text{ mm}$; flow rate of the hydraulic oil through throttle openings is $\mu=0.62$; nominal pressure in the hydraulic system $p_0=10.0\text{ MPa}$; hydraulic oil density $\rho=850\text{ kg/m}^3$; the coefficient of the housing compliance of the hydraulic drive system, filled with the hydraulic oil is $K=0.6\cdot 10^{-9}\text{ m}^2/\text{N}$, the diameter of the separator flow nozzle slide valve $d_{zof}=25\text{ mm}$; the moment of inertia in the rotating parts, which are connected to the shaft of the hydraulic motor $I=100\text{ kg}\cdot\text{m}^2$; the mass of the ensilage fodder separator moving parts $m_{mp}=45\text{ kg}$ is reduced to the Π -shaped frame; the coefficient of viscous friction $\beta=2.5\cdot 10^3\text{ N}\cdot\text{s}$; the diameter of the actuating hydraulic cylinder supplying the Π -shaped frame $D_z=63\text{ mm}$; the volume of hydro-line that connects the actuating hydrostatic motors with a flow separator $W_1= W_2= W_4= 100\text{ cm}^3$; the volume of the hydro-line connecting the throttle with the torsion housing of the flow separator $W_3=25\text{ cm}^3$; the value of the flow separator slide valve displacement to the left of the stop $b_1=1\text{ mm}$; the value of the flow separator slide valve displacement to the right of the stop $b_2=2\text{ mm}$; stiffness of the spring installed in the interstitial housing of the flow separator slide valve $C_{pr}=0.5\text{ N/mm}$.

Fig. 2 shows the block-portion separator parameters change – the oil flow, the displacement of the flow slide valve, the angular speed of the hydraulic motor and the speed of the hydraulic cylinder rod which occur during the transition process that is caused by changes in the loads on the actuating hydraulic drives. The change in the rotation speed of the hydraulic motor shaft and the Π -shaped frame feeding speed arose as a result of the flow slide valve displacement at 3 mm to the opening of the first working window connecting the pump with the hydraulic motor and reducing the opening of the second working window, respectively, the oil in the corresponding housings of the hydraulic motor and the hydraulic cylinder (Fig. 2, f). The oil volume supply Q_1 , consumed by the hydraulic motor increases from $0.088\cdot 10^{-1}\text{ m}^3/\text{min}$ to $0.136\cdot 10^{-1}\text{ m}^3/\text{min}$ which corresponds to the increase in the rate of cutting of silage monolith by 57 %. At the same time, oil supply Q_2 , consumed by the hydraulic cylinder decreases from $0.113\cdot 10^{-1}\text{ m}^3/\text{min}$ to $0.075\cdot 10^{-1}\text{ m}^3/\text{min}$ which corresponds to the decrease in the feed rate of the Π -shaped frame by 43%.

Therefore, the oscilloscopes shown in Fig. 2 indicate that the proposed system of hydraulic drives for the block-portion separator works in a steady mode while providing a wide range in speed control of actuators. It allows stabilizing the cutting forces while changing the conditions of cutting and, thus, applying the reserves for reducing the power of the hydraulic drives used.

At the same time, it was found that certain parameters of the hydraulic system have a greater impact on the expansion of the hydraulic system operation adjustment range, which allows identifying rational values of the parameters and increasing responsiveness and efficiency of the proposed ensilage fodder block-portion separator hydraulic drives system.

The objective criterion for the efficiency of adjusting speed of the hydraulic motor shaft according to the change in feeding the hydraulic cylinder rod is the dependence of those parameters on the cutting tool load during the separation of the ensilage fodder bale. Thus, Fig. 2 shows the transition process in the hydraulic drive for the fodder block-portion separator calculated on the condition that the loading moment on the hydraulic motor shaft increases to the value of $M_{gm}=100\text{ N}\cdot\text{m}$ from the initial zero value. This process corresponds to the process of cutting into the monolith of ensilage fodder. According to the results, the feed of the rod decreases, as the supply of the oil (oil flow rate Q_2) to the hydraulic cylinder decreases. At the same time, the hydraulic motor shaft rotation speed increases, affecting the decrease of the cutting force.

Fig. 3 shows the dependences on the change in the volume flow of the hydraulic oil to the actuating hydraulic motors, that is the cutting mechanism drive hydraulic motor and the Π -shaped frame drive hydraulic cylinder. Q_1 and Q_2 show the dependence on the value of the load moment in the hydraulic motor M_{gm} . In the initial state, without loading on the drives of the operating elements in the cutting mechanism, the flow rate from the pumping station is evenly distributed between the hydraulic motors $Q_1 = Q_2=0.10 \times 10^1\text{ m}^3/\text{min}$ (Graph 1). Increasing the loading at the moment of cutting on a hydraulic motor shaft according to the predetermined algorithm for the operation of the hydraulic system leads to an increase in the flow (flow rate) Q_1 to the hydraulic motor of the cutting mechanism drive (Graph 2) and to the reduced supply of the oil Q_2 to the cylinder of the Π -shaped frame drive (Graph 3). So, with the increase of the loading moment to the value $M_{gm}=50\text{ N}\cdot\text{m}$, the oil flow Q_1 at the inlet of the hydraulic motor of the cutting mechanism increases from $0.10\cdot 10^{-1}\text{ m}^3/\text{min}$ in the initial state to $0.115\cdot 10^{-1}\text{ m}^3/\text{min}$, i.e. increases by 15%. Accordingly, there is a decrease in the oil flow rate Q_2 at the inlet of the hydraulic cylinder of the Π -shaped frame. If there is an increase of loading on the hydraulic motor to $M_{gm}=50\text{ N}\cdot\text{m}$, the flow rate Q_2 decreases accordingly to $0.085\cdot 10^{-1}\text{ m}^3/\text{min}$, i.e. decreases by 15%. In case of further increase of the loading moment to $M_{gm}=100\text{ N}\cdot\text{m}$, the flow rate Q_1 increases to $0.13\cdot 10^{-1}\text{ m}^3/\text{min}$, that is, the growth of flow rate is 30% of the initial value.

In this case, the flow rate of the oil Q_2 decreases to $0.07 \times 10^{-1} \text{ m}^3/\text{min}$ which means a 30% decrease in the Q_2 rate and, accordingly, a decrease in the feed speed of the Π -shaped frame that unloads cutting mechanism and provides the total power of the drives at the level which does not exceed 5 kW.

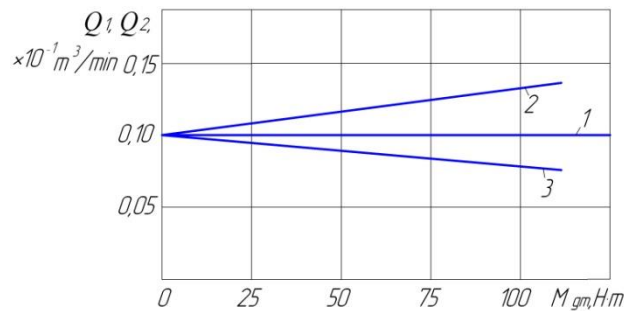


Fig. 3 - The influence of the cutting mechanism drive hydraulic motor load moment on the change of the oil flow Q_1 at the input of the hydraulic motor and Q_2 at the input of the hydraulic cylinder
 1- flow rates Q_1 and Q_2 without loading, 2 - dependence of the flow rate Q_1 on the loading moment M_{gm} ,
 3 - dependence of the flow rate Q_2 on the loading moment M_{gm}

Further increase in the loading moment on the hydraulic motor of the cutting mechanism drive at the value $M_{gm}=150 \text{ N}\cdot\text{m}$ increases the pressure in the injection line to a value exceeding the value of the pressure in setting the safety valve, which is 16 MPa. In this case, the periodic opening of the safety valve leads to the self-sustained wave process, which is unacceptable in terms of the agricultural machine performance. In this case, other hydraulic drives system parameters of the ensilage fodder block-portion separator were of initial values.

Fig. 4 presents the dependence graphs of the oil volume flow change (flow rates) to the actuating hydraulic motors – the hydraulic motor drive of the cutting mechanism and the hydraulic cylinder drive of the Π -shaped frame; the dependence of Q_1 and Q_2 on the surface f_{dr} of the throttle, through which the treated housing of the flow slide valve is connected with hydraulic line of the oil supply to the hydraulic motor. Fig. 4a shows the dependencies of the indicated flow rates on the throttle area, identified at different operating modes of the actuating hydraulic motors with and without loading.

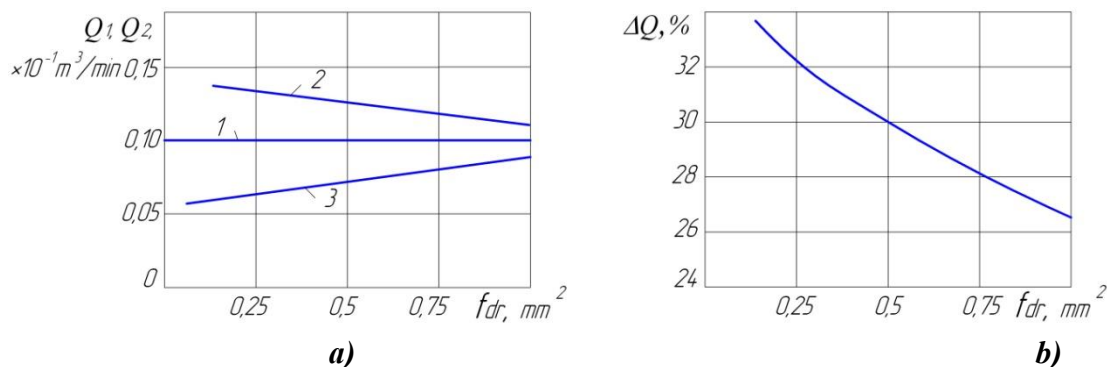


Fig. 4 - Assessment of the influence of the throttle f_{dp} flow section area size on the change in the oil flow rate at the hydraulic motor Q_1 inlet and the hydraulic cylinder Q_2 inlet
 a) dependence of the flow rate Q_1 and Q_2 on the size of the area of the throttle f_{dr} (1 – the values of the flow rates Q_1 and Q_2 without loading, 2 - dependence of the flow rate Q_1 on the area of the throttle with loading, 3 - dependence of the flow rate Q_2 on the area of the throttle with loading), b) relative change in the flow rates Q_1 and Q_2 in case of changing the size of the throttle area f_{dr} .

Dependence 1 corresponds to the flow rate Q_1 and Q_2 in the process of the hydraulic drives system operation without loading. In fact, changing the size of the throttle surface does not affect the balance of the specified flow rates and their value, in this range of change of the throttle area, remains unchanged $Q_1=Q_2=0.10 \times 10^{-1} \text{ m}^3/\text{min}$. At the simultaneous feeding on the shaft of the hydraulic motor the loading moment $M_{gm}=100 \text{ N}\cdot\text{m}$ and on the hydraulic cylinder rod with the force $F_{rez}=1200 \text{ N}$, which occurs at 400th millisecond (0.4 s), there is a predicted change in oil flow rates because of the pressure of the block-portion separator hydraulic system.

The flow rate Q_1 with the value of the throttle area $f_{dt}=1 \text{ mm}^2$ increases to $Q_1=0.127 \times 10^{-1} \text{ m}^3/\text{min}$. (Graph 2), and the flow rate Q_2 decreases to $Q_2=0.073 \times 10^{-1} \text{ m}^3/\text{min}$. (Graph 3). With further decreasing the throttle area to the value $f_{dt}=0.15 \text{ mm}^2$, there is an increase in the difference between the rates Q_1 and Q_2 . The flow rate Q_1 increases to a value of $Q_1=0.134 \times 10^{-1} \text{ m}^3/\text{min}$, that is, increases in accordance with the original value by 33.6%, and the flow rate Q_2 decreases to $Q_2=0.066 \times 10^{-1} \text{ m}^3/\text{min}$ (the decrease is 33.6%), namely, it becomes almost twice lower than the rate Q_1 . The speed of the output parts of the hydraulic motors varies accordingly, which should reduce the cutting force and the torque on the hydraulic motor shaft. The responsiveness of the hydraulic drive system to the changes of the loading on the operating elements allows adjusting the loading on the cutting mechanism at a wider range. This is also facilitated by the range expansion of adjusting the feeding speed in the Π -shaped frame.

Fig. 5 presents the graphs of the dependence of the volume feeds variation (rates) on the actuating hydraulic motors, particularly the cutting mechanism drive hydraulic motor and the Π -shaped frame drive hydraulic cylinder; dependence of Q_1 and Q_2 on the width a of the slide valve operating edges.

The graphs of dependencies are plotted on the conditions that the parameters of the hydraulic system in the block-portion separator correspond to the initial values, and the value of the loading moment at the 400th ms of the hydraulic motor of the cutting mechanism drive is $M_{gm}=100 \text{ N}\cdot\text{m}$.

According to the graphs (Fig. 5) that show reducing the width of the flow slide valve edges considerably extends the range of feeding adjustments of Q_1 and Q_2 . If at the initial value of the width of the flow slide valve edges $a=1 \text{ mm}$ at the loading moment on the hydraulic motor of the cutting mechanism, the flow rate at the input of the hydraulic motor increases to $Q_1=0.13 \times 10^{-1} \text{ m}^3/\text{min}$, and at the cylinder inlet in the drive of the Π -shaped frame decreases to $0.07 \times 10^{-1} \text{ m}^3/\text{min}$, then, with reducing the width of the operating edge of the slide valve to the value of $a=0.5 \text{ mm}$, the flow rate Q_1 increases to $Q_1=0.16 \times 10^{-1} \text{ m}^3/\text{min}$ (Graph 2), and the flow rate Q_2 decreases to $Q_2=0.04 \times 10^{-1} \text{ m}^3/\text{min}$ (Graph 3). As a result, the range of adjustment of the oil flow rates increases, which goes to the actuating hydraulic motors hydraulic drive system of the block-portion separator. As a result the responsiveness of the drives to the loading considerably expands. The accuracy in the analysis of the control corresponding signals of the hydraulic drive system operating mode improves.

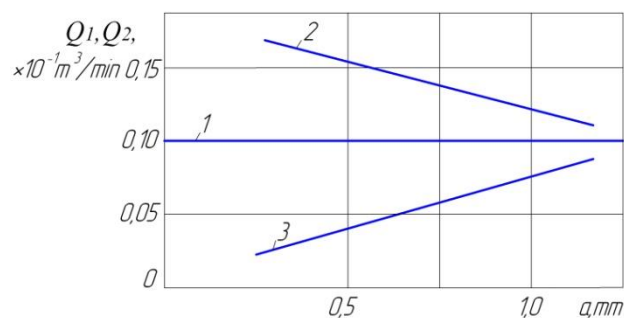


Fig. 5 - Influence of the width a of the flow separator slide valve edge on the oil flow rate change at the hydraulic motor Q_1 inlet and at the hydraulic cylinder Q_2 inlet

1- the value of flow rates Q_1 and Q_2 without loading, 2 - dependence of the flow rate Q_1 on the width of the slide valve edge of the flow separator under loading, 3 - dependence of the flow rate Q_2 on the width of the slide valve edge of the flow separator under loading.

The analysis of the influence of other block-portion separator hydraulic system parameters on the width of the volume control range of the flow rates in the hydraulic lines that provide the oil flow rate by the cutting mechanism drive hydraulic motor and the Π -shaped frame drive hydraulic cylinder showed that the change in these parameters values in a wide range does not significantly affect the expanding speed adjustment range of the hydraulic motor and the hydraulic cylinder. At the same time, in this case there are unstable modes of operation of the hydraulic system and, as a result, it loses efficiency.

As a result of the study, it was found that by changing the operating widths of the separator slide valve in the direction of reduction, there is a significant increase in the responsiveness of the hydraulic drive system in the block-portion separator to the changes in the loading on the cutting tool. As a result, the adjustment range of the hydraulic cylinder feeding of the Π -shaped frame, which increases the efficiency of stabilizing the separation process from the monolith of block-portion for ensilage fodder with a minimum power of the hydraulic drive system, is substantially expanded.

CONCLUSIONS

The results of the mathematical modelling prove the principle possibility to provide the given algorithm for the operation of the block-portion separator hydraulic drive system in the process of the proposed system in hydraulic drives, which must provide the speed control of the actuating hydro-motors in this hydraulic system in accordance with the load of the cutting mechanism. So, with increasing the load of the cutting mechanism, the supply of the hydraulic cylinder of the П-shaped frame decreases at the same time as the proportional increase in the rotation speed of the drive hydro-motor in the cutting mechanism.

The studies of the mathematical model showed the possibility to adjust the range of changes in the hydraulic motor speed and the feeding of the rod by the appropriate choice of rational values for a number of parameters of the hydraulic system in the block-portion separator. In the largest degree, the increase of the adjustment range is possible by reducing the width of the operating edges of the separator slide valve to the value $a=0.5$ mm, and the area of the throttle adjustment to the value $f_{dr}=1$ mm². The specified values of the parameters correspond to stable operating modes of the hydraulic system in the block-portion separator. Changing the values of other parameters of the hydraulic system in the block-portion separator does not cause a noticeable expansion of the speed adjustment range of the system in hydraulic drives of the block-portion separator.

REFERENCES

- [1] Andrenko P.N., Lurye Z. Ya., (2016), Trends in development of fluid power drive, *Industrial hydraulics and pneumatics (Промислова гідраліка і пневматика)*, №2 (52), pp. 3–14, Ukraine;
- [2] Galukhin N.A., (2014), Research on the influence of pump flow saturation on the flow sharing efficiency coefficient, *Industrial hydraulics and pneumatics*, №1(43), pp.55–63, Ukraine;
- [3] Ivanov M.I., Hrytsun A.V., Podolyanyn I.M., Rutkevych V.S., (2010), Dependence of the cutting efforts on physical and mechanical features of ensilage fodders (Залежність зусиль різання від фізико-механічних властивостей консервованих кормів), *Vibrations in technical devices and technologies (Вібрації в техніці та технологіях)*, №4 (60), pp. 106–110, Ukraine;
- [4] Ivanov N., Shargorodskiy S., Rutkevych V.,(2013), Mathematical model of the hydraulic drive of ensilage fodder block-batch separator (Математическая модель гидропривода блочно-порционного отделителя консервированных кормов), *MOTROL*, №5, pp.83–91, Ukraine;
- [5] Ivanov M.I., Pereyaslavskiy O.M., Rutkevych V.S., Zinev M.V., Sharyi A.I., (2013), *Hydraulic drive of a block-batch separator of ensilage fodder (Гідралічний привод блочно-порційного відокремлювача консервованих кормів)*, Patent № 80958, UA;
- [6] Rutkevych V.S., (2017), Adaptive hydraulic drive of ensilage fodder block-batch separator (Адаптивний гідралічний привод блочно-порційного відокремлювача консервованого корму), *Machines, power production, transport of agro-industrial complex (Техніка, енергетика, транспорт АПК)*, №4(99), pp. 108-113, Ukraine;
- [7] Kozlov L.G. (2013), Reducing power losses in the hydraulic system of a mobile operating machine (Зменшення втрат потужності в гідросистемі мобільної робочої машини), *Bulletin KhNU (Вісник ХНУ)*, № 4, pp. 24-30, Ukraine;
- [8] Privalov F.I., (2017), Fodder production development strategy until 2020 (Стратегія розвитку кормопроизводства до 2020 года), *Farming and plant protection (Земледелие и защита растений)*, № 1, pp. 15-21, Ukraine;
- [9] Sidorenko V.S., Grischenko V.I., Rakulenko S.V., Poleshkin M.S., (2017), Adaptive hydraulic drive with volumetric flow control of the technological machine (Адаптивный гидропривод с объемным регулированием подачи инструмента технологической машины), *Bulletin of Don State Technical University (Вестник Донского государственного технического университета)*, № 2, pp. 88-98, Ukraine;
- [10] Shylo I.N., Tolochko N.K., Romanyuk N.N., Nukeshev S.O., (2016), *Intellectual technologies in agro-industrial complex (Интеллектуальные технологии в агропромышленном комплексе)*. Minsk: BSATU, 336 pp.