

**Latvia University of Life Sciences and Technologies
Faculty of Engineering**

**22nd International Scientific Conference
ENGINEERING FOR RURAL
DEVELOPMENT**

Proceedings, Volume 22

May 24-26, 2023

Jelgava 2023

PROGRAM COMMITTEE

Chairman:

Aivars Aboltins Latvia University of Life Sciences and Technologies, Latvia

Members:

Valeriy Adamchuk National Academy of Agrarian Science of Ukraine (NAASU), Ukraine
Mariusz Adamski Bialystok University of Technology, Poland
Zhayt Algazy Kazakh National Research Technical University, Kazakhstan
Andres Annuk Estonian University of Life Sciences, Estonia
Atilgan Atilgan Suleyman Demirel University, Turkey
Marco Bietresato University of Udine, Italy
Milan Brozek Czech University of Life Sciences Prague, Czech Republic
Volodymyr Bulgakov National University of Life and Environmental Sciences of Ukraine,
Ukraine
Lorant Denes David Eszterházy Károly University, Hungary
Jan Dizo University of Zilina, Slovakia
Givi Gavardashvili Georgian Technical University, Georgia
Marek Gaworski Warsaw University of Life Science, Poland
Semjons Ivanovs Latvia University of Life Sciences and Technologies, Latvia
Algirdas Jasinskas Vytautas Magnus University, Lithuania
Jan Radoslaw Kaminski Warsaw University of Life Science, Poland
Jozsef Kapozsta Szent Istvan University, Hungary
Pavel Kic Czech University of Life Sciences Prague, Czech Republic
Vitalijs Komasilovs Latvia University of Life Sciences and Technologies, Latvia
Aigars Laizans Latvia University of Life Sciences and Technologies, Latvia
Chou Li-Chen Shantou University, China
Tomasz Lipinski University of Warmia and Mazury in Olsztyn, Poland
Francesco Marinello University of Padova, Italy
Agris Nikitenko Riga Technical University, Latvia
Juri Olt Estonian University of Life Sciences, Estonia
Andrea Pezzuolo University of Padova, Italy
Simon Popescu Transylvania University of Brasov, Romania
Juris Priekulis Latvia University of Life Sciences and Technologies, Latvia
Stasys Slavinskas Vytautas Magnus University, Lithuania
George Srzednicki University of New South Wales, Australia
Aleksejs Zacepins Latvia University of Life Sciences and Technologies, Latvia
Wanhao Zhang University College London, United Kingdom
Yang Zhang University of Sheffield, United Kingdom

EDITORS

Editor of language: Larisa Malinovska

Technical editor: Vitalijs Osadcuks

CONFERENCE ORGANISING COMMITTEE

Chairman:

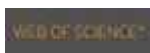
Janis Palabinskis, Latvia University of Life Sciences and Technologies, Latvia

Members:

Aivars Aboltins	Latvia University of Life Sciences and Technologies, Latvia
Dainis Berjoza	Latvia University of Life Sciences and Technologies, Latvia
Baiba Briede	Latvia University of Life Sciences and Technologies, Latvia
Ilmars Dukulis	Latvia University of Life Sciences and Technologies, Latvia
Ainars Galins	Latvia University of Life Sciences and Technologies, Latvia
Janis Kjakste	Latvia University of Life Sciences and Technologies, Latvia
Vitalijs Osadcuks	Latvia University of Life Sciences and Technologies, Latvia
Aldis Pecka	Latvia University of Life Sciences and Technologies, Latvia
Mareks Smits	Latvia University of Life Sciences and Technologies, Latvia
Kaspars Vartukapteinis	Latvia University of Life Sciences and Technologies, Latvia
Natalija Vronska	Latvia University of Life Sciences and Technologies, Latvia
Olafs Vronskis	Latvia University of Life Sciences and Technologies, Latvia

ABSTRACTED AND INDEXED: Elsevier SCOPUS, Clarivate Analytics Web of Science, AGRIS, CAB Abstracts, CABI full text, EBSCO Academic Search Complete, EBSCO Central & Eastern European Academic Source, Agricola.

Scopus®



CROSSREF DATABASE: DOI for each paper



CROSS-CHECKED BY: CrossRef.org Similarity Check



ONLINE: Proceedings *ENGINEERING FOR RURAL DEVELOPMENT* is available online at <http://tf.llu.lv/conference/proceedings2023/>

ISSN 1691-5976

CONTENT

Andis Lazdins, Kristaps Makovskis, Agris Zimelis, Igors Gusarevs, Germans Gusarevs PRODUCTIVITY OF NEW HARVESTER PROTOTYPE IN WILLOW PLANTATIONS WITH DIFFERENT GROWING STOCK.....	14
Iryna Humeniuk, Iryna Mushenyk, Nadiia Popel, Oksana Kuntso STRATEGIES FOR EFFECTIVE COMMUNICATION IN EDUCATIONAL ENVIRONMENT IN WARTIME.....	22
Viktor Nikolaev, Janat Musayev, Algazy Zhauyt, Aizhan Makhanova, Zhanar Mukatanova, Anar Kabytkarim, Elnur Kozhakmetov METHOD FOR DETERMINING AREA OF PARAMETRIC RESONANCES OF WHEELSET OF RAILWAY VEHICLE	29
Iryna Humeniuk, Olha Prokopova, Oksana Maksymets, Anastasiia Polishchuk LANGUAGE ACQUISITION FOR ESP STUDENTS WITH SUGGESTOPEDIA METHOD APPLICATION	38
Inna Samuilik, Felix Sadyrbaev, Svetlana Atslega ON MATHEMATICAL MODELS OF ARTIFICIAL NEURAL NETWORKS	45
Miroslav Blatnický, Denis Molnar, Jan Dizo, Vadym Ishchuk VEHICLE SLALOM PASSAGE ANALYSIS	51
Ales Dittrich, Radek Prochazka, Josef Popelka, Dong Nguyen Phu EFFECT OF HVO CNG DUAL-FUEL OPERATION MODE ON EMISSIONS AND PERFORMANCE OF CI ENGINE.....	58
Atanas Atanasov, Ivaylo Hristakov, Veselin Dochev MONITORING AGROMETEOROLOGICAL FACTORS AND BEEHIVE WEIGHT DURING SUNFLOWER (<i>HELIANTHUS ANNUUS</i>) FLOWERING	64
Raimonds Valdmanis, Viesturs Sints, Maija Zake CO-FIRING AND MICROWAVE PRE-TREATMENT OF LIGNOCELLULOSIC PELLETS FOR CONTROL OF THERMOCHEMICAL CONVERSION OF BIOMASS MIXTURES AND SUSTAINABLE ENERGY PRODUCTION	71
Oleg Zagurskiy, Mykhailo Pivtorak, Sergii Bondariev, Oleksandr Demin, Igor Kolosok METHODS OF RELIABILITY MANAGEMENT IN SUPPLY CHAIN	78
Jaymin-Vrajlal Sanchaniya, Sai-Pavan Kanukuntla, Kagan-Berkay Senyurt FABRICATION AND MECHANICAL PROPERTIES OF POLYMER COMPOSITE NANOFIBER MATS	85
Viktors Ivanovs, Pavels Gavrilovs ANALYSIS AND INVESTIGATION ON DEFECTS – DELAMINATION AND SPALLING OF METAL ON ROLLING SURFACE OF RAIL HEAD UNDER CODE X 10.1	91
Rashmi Sanchaniya, Ineta Geipele IDENTIFYING EXISTING PROPERTIES FOR REUSE INTO SOCIAL HOUSING	100
Vidas Damanauskas, Algirdas Janulevicius INFLUENCE OF TRACTOR SLIPPAGE ON CROP YIELD	108
Andrejs Jaunzems, Ilze Balode ECONOMICAL LINKAGES OF INDUSTRY ““ELECTRICITY, GAS, STEAM AND AIR CONDITIONING SUPPLY”” IN BALTIC STATES AND FINLAND	114
Janis Kajaks, Karlis Kalnins, Martins Zalitis, Juris Matvejs RHEOLOGICAL PROPERTIES OF VIRGIN, RECYCLED AND MIXED HIGH DENSITY POLYETHYLENE AND WOOD PLASTIC COMPOSITES WITH PLYWOOD SANDING DUST	124

Jan Dizo, Miroslav Blatnický, Vadym Ishchuk, Sebastian Solcansky COMPARISON OF SELECTED OUTPUTS OF RAIL VEHICLE BOGIE VARIANT SOLUTIONS.....	131
Algirdas Jasinskis, Savelii Kukharets, Olena Sukmaniuk, Vladyslav Kovalchuk EXPERIMENTAL STUDY OF GASIFICATION RATE OF FAST-GROWING WILLOW BIOMASS	138
Karlis Amatnieks, Ruslans Smigins, Aivars Birkavs THERMODYNAMIC AND NO _x EMISSION ANALYSIS OF DIESEL ENGINE WITH INTAKE MANIFOLD STEAM INJECTION	145
Vadym Ishchuk, Jan Dizo, Miroslav Blatnický, Sebastian Solcansky ASSESSMENT OF DERAILMENT QUOTIENT OF LOCOMOTIVE BOGIE	152
Jozsef Kaposzta, Balazs Lorinc STRATEGIC ANALYSIS OF WELFARE INDICATORS IN EU MEMBER STATES THAT JOINED EU AFTER 2004 DURING 2015-2021	158
Alexander Janushevskis, Sanjay-Rajni Vejanand, Agris Gulevskis SHAPE OPTIMIZATION OF VENTILATION ELEMENTS FOR PROTECTIVE CLOTHING BY USING METAMODELING APPROACH.....	164
Igor Tsiz, SerhiĻ– Khomych, Volodymyr Didukh, SerhiĻ– Yukhymchuk STUDY OF DEHYDRATION OF ORGANIC SAPROPEL BY COMPRESSION METHOD	173
Tomasz Lipinski, Jacek Pietraszak MODIFICATION OF ALSI7MG ALLOY WITH SR AND SB	179
Tomasz Lipinski, Jacek Pietraszak EFFECT OF 10% NaCl ON BASIC CARBON STRUCTURAL P235TR2 STEEL AT 10°C.....	185
Eriks Kronbergs, Mareks Smits KINEMATIC ANALYSIS OF PARALLEL TRANSFER MECHANISM	191
Andis Bardulis, Dana Purvina, Arta Bardule, Andis LazdĻns POTENTIAL ROLE OF TREE INTRODUCTION IN AGRICULTURAL LAND TO REDUCE GREENHOUSE GAS EMISSIONS	196
Uldis Strautins, Maksims Marinaki ON MODELLING OF THREE DIMENSIONAL FLOW IN EXTRACTION OF BIOLOGICALLY ACTIVE SUBSTANCES FROM PLANTS.....	204
Roman Antoshchenkov, Vitalina Antoshchenkova, Viktor Kis, Dmytro Smitskov INCREASING ACCURACY OF MEASURING FUNCTIONING PARAMETERS OF AGRICULTURAL UNITS	210
Iulian Vocea, Florin Nenciu, Mihai Matache, Remus Oprescu, Vlad-Nicolae Arsenoiaia EXPERIMENTAL RESEARCH ON PRODUCTION AND USE OF FLOATING PELLETS IN FISH FEED IN AQUACULTURE SYSTEMS	216
Ricardas Malkus, Jurate Liebuviene, Vida Jokubyniene UNIFIED EVALUATION CRITERIA SYSTEM FOR SELECTION OF MOST PREFERABLE MODE, ROUTE AND MEANS OF TRANSPORTATION FOR OVERSIZED AND SUPER HEAVY CARGOES	224
Rita Lukacs, Andras Szeberenyi, Arpad Papp-Vary ATTITUDES TOWARDS ENVIRONMENTALLY CONSCIOUS LIFESTYLE AMONG UNIVERSITY STUDENTS IN BUDAPEST - IN LIGHT OF THEIR PURCHASING DECISIONS AND WASTE MANAGEMENT.....	233
Vida Jokubyniene, Jurate Liebuviene RESEARCH IN VEHICLE EXHAUST GAS COMPLIANCE WITH EURO STANDARD	242
Andis LazdĻns, Kristaps Makovskis, Agris Zimelis, Santa Kaleja GREENHOUSE GAS EMISSIONS IN TYPICAL FOREST BIOFUEL SUPPLY CHAINS IN STATE FORESTS	250

Ramunas Mieldazys, Egle Jotautiene, Aloyzas Gaudutis, Algirdas Jasinskas COMPARISON OF PHYSICAL MECHANICAL PROPERTIES OF GRANULATED FERTILIZER PRODUCED FROM COMPOSTED CATTLE AND DRIED COW, PIG AND POULTRY MANURE	258
Viacheslav Bratishko, Sergey Shulga, Olena Tigunova, Oksana Achkevych ULTRASONIC CAVITATION OF LIGNOCELLULOSIC RAW MATERIALS AS EFFECTIVE METHOD OF PREPARATION FOR BUTANOL PRODUCTION	264
Zbigniew Siemiatkowski, Dmitrij Morozow, Mirosław Rucki, Mykola Prokopiv, Volodymyr Nerubatskyi, Ludmila Voloshina, Edvin Hevorkian STUDY IN DURABILITY OF CR ₂ O ₃ -BASED CERAMIC CUTTING TOOLS	269
Augustina Pruteanu, Nicoleta Vanghele, Dan Cujbescu, Mihaela Nitu, Iuliana Gageanu REVIEW OF EFFECTIVENESS OF VISUAL AND AUDITORY BIRD SCARING TECHNIQUES IN AGRICULTURE.....	275
Olha Chaikovska, Oksana Palyliulko, Liudmyla Komarnitska, Maryna Ikonnikova IMPACT OF MINDSET ACTIVITIES ON PSYCHOLOGICAL WELL-BEING AND EFL SKILLS OF ENGINEERING STUDENTS IN WARTIME.....	282
Martins Irbe, Janis Viba, Marina Cerpinska, Vitalijs Beresnevics, Kristaps Spade STUDY OF FLEXURAL AND YIELD STRENGTH OF GYPSUM COMPOSITE BOARDS	288
Jozsef Kaposzta, Balazs Lorinc EXAMINING REGIONAL ROLE OF INDUSTRIAL PRODUCTION IN TRANSFORMATION OF HUNGARIAN ECONOMIC STRUCTURE	294
Michal Ballay, Jaroslav Kapusniak, Jozef Kubas, Ludmila Macurova ANALYSIS OF RESPONSE ACTIVITY OF FIRE BRIGADES IN EVENT OF TRAFFIC ACCIDENT WITH OCCURRENCE OF HAZARDOUS SUBSTANCE NEAR PROTECTED AREA OF VILLAGE.....	301
Laura Leja, Uldis Strautins STUDY OF BIOMASS PELLET NETWORK MODEL FOR HEAT AND MASS TRANSPORT IN POROUS MEDIA THROUGH GAS CHANNELS	307
Dmitrijs Gorbacovs, Pavels Gavrilovs, Janis Eiduks, Guntis Strautmanis FAILURE ANALYSIS OF RUBBER-CORD COUPLINGS OF ER2 SERIES ELECTRIC TRAINS.....	313
Ludmila Macurova, Pavol Kohut, Miroslav Redl, Michal Ballay ANALYSIS OF ACCIDENT EVENT - AGRICULTURAL MACHINE AND MOTORCYCLIST	321
Sandra Gusta, Mareks Pavars, Kaspars Grabens CONSTRUCTION INDUSTRIES WASTE CIRCULATION PROBLEMS IN LATVIA	328
Anda Abola, Antonija Rimša, Maris Strazds, Rita Veilande, Gita Revalde DATA CORRELATION OF MERCURY IN EGGSHELLS AND EGGSHELL MEMBRANES OF WILD BIRDS	338
Annika Paltsepp OPTIMIZATION OF STEPPED INELASTIC TUBES	344
Mihails Urbans, Jelena Pundure, Rihards Veiss AVIATION ACCIDENT - FIRE MODELLING USING PROGRAMME PATHFINDER IN RIGA AIRPORT LIABILITY AREA	350
Vasyl Khmelovskyi, Victor Rebenko, Oleg Zabolotko, Viacheslav Bratishko IMPROVEMENT OF VACUUM PUMP DESIGN FOR MILKING ANIMALS	357
Yevhenii Aftandiljants, Svyatoslav Gnyloskurenko, Helena Meniailo, Valerii Khrychikov INFLUENCE OF TECHNOLOGICAL FACTORS ON FORMATION PROCESS OF BIMETALLIC CASTINGS	364
Indulis Straume, Imants Plume, Vilis Dubrovskis, Viktors Dreimanis, Eriks Zukovskis BIOGAS POTENTIAL FROM CO-FERMENTATION OF FOOD LEFTOVERS AND LIGNOCELLULOSIC BIOMASS AT MESOPHILIC TEMPERATURES	371

Anete Kalnina, Gunita Mazure OPPORTUNITIES FOR USE OF CRYPTO-ASSETS IN RENEWABLE ENERGY SECTOR WITHIN EUROPEAN UNION LEGAL FRAMEWORK	378
Viktor Trokhaniak, Aivars Aboltins, Semjons Ivanovs, Ivan Holovach, Valerii Adamchuk, Oleh Chernysh SIMULATION OF NEW DESIGN HEAT-EXCHANGE EQUIPMENT FOR MICROCLIMATE MAINTENANCE SYSTEMS IN POULTRY HOUSES	384
Oleg Zabolotko, Oksana Achkevych, Svitlana Potapova, Ruslan Kisilov RESEARCH IN MILKING MACHINE OF PAIRWISE COMBINED TYPE.....	390
Vytautas Adomavicius, Gintvile Simkoniene OVERVIEW OF INNOVATIONS AND RECOMMENDATIONS FOR EFFICIENT OPERATION OF RES-BASED POWER PLANTS	397
Olha Chaikovska, Olena Niskhodovska, Valentyna Spivachuk, Alina Kruk ENHANCING EFL PROFESSION-BASED VOCABULARY ACQUISITION THROUGH 3D ENGINEERING ANIMATION FOR ENGINEERING STUDENTS.....	407
Sandija Zeverte-Rivza, Peteris Rivza, Ina Gudele IMPACT OF DIGITALISATION AND R&D ON THE ECONOMIES OF EU MEMBER STATES	413
Aleksandrs Okss, Aleksandrs Valisevskis, Ugis Briedis, Ilze Baltina FUNCTIONAL FABRICS FOR MULTILAYERED TEXTILE PRESSURE SENSORS: COMPARISON OF STRUCTURES AND SENSITIVITY CHARACTERISTICS.....	419
Olafs Vronskis, Aivars Kakitis FRICTION PROPERTIES OF REED STALKS	427
Michal Ballay, Jozef Kubas ANALYSIS OF CAUSES AND CONSEQUENCES OF ELECTRIC CAR ACCIDENTS.....	433
Jozef Kubas, Michal Ballay DEVELOPMENT OF CHARGING INFRASTRUCTURE WITH REGARD TO DIFFERENCES OF REGIONS IN ENVIRONMENT OF SLOVAKIA	439
Olena Deviatko, Nataliia Kanivets, Tereziiia Lokes-Krupka, Serhii Kravchenko, Mikhailo Mushtruk INNOVATIVE ENGINEERING MODELING TECHNOLOGICAL PROCESS OF URINE COLLECTION IN DOGS.....	445
Dana Purvina, Ieva Licite, Aldis Butlers, Andis Lazdins, Guntis Saule, Andris Turks, Larysa Prysiazhniuk EVALUATION OF PEAT LAYER THICKNESS EFFECT ON SOIL GHG FLUXES	454
Zaiga Anna Zvaigzne, Aldis Butlers APPLICATION OF FOURIER-TRANSFORM INFRARED SPECTROSCOPY FOR QUANTIFICATION OF CHEMICAL PARAMETERS IN PEAT SAMPLES	461
Iiona Skranda, Aldis Butlers APPLICATION OF FOURIER INFRARED SPECTROSCOPY METHOD FOR QUANTIFICATION OF FOLIAR LITTER COMPOSITION	467
Marco Bietresato, Gellio Ciotti, Alessandro Zironi, Roberto Zironi, Rino Gubiani PROPOSAL FOR METHODOLOGY TO ANALYSE OPERABILITY OF WINE PRODUCTION PLANT IN TERMS OF POWER DEMAND	473
Alberts Auzins, Imants Jansons MODELLING OF FAM-GATE NITROGEN BALANCE IN PIG PRODUCTION - CASE STUDY OF LATVIA	479
Aleksejs Safonovs, Aleksey Mironov, Pavel Doronkin, Vitalijs Kuzmickis SENSITIVITY SPREAD OF PIEZO ELECTRIC FILMS USED AS SENSORS FOR MACHINE AND STRUCTURAL MONITORING.....	486
Aleksey Mironov, Pavel Doronkin QUANTITATIVE EVALUATION OF TEETH GEARS APPLYING TECHNIQUES OF VIBROPASSPORT.....	492

Volodymyr Bulgakov, Semjons Ivanovs, Ivan Holovach, Oleg Adamchuk, Aivars Aboltins, Yevhen Ihnatiev, Svitlana Polishchuk THEORETICAL DETERMINATION OF ABSOLUTE SPEED OF MINERAL FERTILISER PARTICLES FROM CENTRIFUGAL SPREADING DISC	498
Volodymyr Bulgakov, Adolfs Rucins, Ivan Holovach, Oleg Adamchuk, Aivars Aboltins, Hrihorii Zabolotnyi, Larysa Kolomiets, Svitlana Polishchuk COMPUTER INVESTIGATION OF MINERAL FERTILISER PARTICLE MOVEMENT ALONG CENTRIFUGAL SPREADER DISC INCLINED UNDER ANGLE TO HORIZONTAL PLANE	506
Volodymyr Bulgakov, Ivan Holovach, Oleg Adamchuk, Adolfs Rucins, Aivars Aboltins RESEARCH IN MINERAL FERTILISER PARTICLE THROWING DISTANCE FROM NEW CENTRIFUGAL FERTILIZER SPREADER WORKING TOOL.....	517
Volodymyr Bulgakov, Semjons Ivanovs, Valerii Adamchuk, Volodymyr Nadykto, Anatolii Zaryshnyak, Vadym Yaremenko, Liudmyla Krasiuk INFLUENCE OF TRACTOR HITCH LINKAGE SYSTEM ON PLOWING UNIT PERFORMANCE.....	523
Firat Arslan, Sinan Kartal WATER MANAGEMENT EFFECT ON TROPICAL FRUITS: CASE STUDY OF ALANYA, TURKEY	533
Sai-Pavan Kanukuntla, Jaymin-Vrajlal Sanchaniya, Vitalijs Beresnevics COMPARATIVE DSC ANALYSIS OF VIRGIN AND NANOFIBER MATS OF PA6.....	539
Ivan Openko, Ruslan Tykhenko, Oleg Tsyvakh, Oleksandr Shevchenko, Yanina Stepchuk, Anatolii Rokochinskiy, Pavlo Volk, Ivan Zhyla, Oleksandr Chumachenko, Yevheniia Kryvoviaz, Anastasiia Horodnycha IMPROVEMENT OF ECONOMIC MECHANISM OF RATIONAL USE OF FOREST RESOURCES USING DISCRETE MATHEMATICS METHOD.....	544
Volodymyr Bulgakov, Myroslav Budzanivskyi, Martin Zach, Maros Korenko, Ivan Beloev, Dana Orszaghova, Petr Dostal, Semjons Ivanovs EXPERIMENTAL RESEARCH ON QUALITY FUNCTIONING OF HAULM RESIDUE REMOVER FROM SUGAR BEET EPICOTYL.....	553
Volodymyr Bulgakov, Semjons Ivanovs, Volodymyr Nadykto, Gennadii Petrov INVESTIGATION OF FRONT PLOUGH FUNCTIONING STABILITY CONDITIONS WITHOUT SUPPORT WHEEL	562
Volodymyr Bulgakov, Semjons Ivanovs, Ivan Beloev, Oleksandra Trokhaniak, Aivars Aboltins, Mykola Tkachenko, Adolfs Rucins, Yevhen Ihnatiev EXPERIMENTAL RESEARCH ON PERFORMANCE OF FLEXIBLE SCREW CONVEYOR WHEN TRANSPORTING AGRICULTURAL MATERIALS	571
Volodymyr Bulgakov, Semjons Ivanovs, Ivan Beloev, Oleksandra Trokhaniak, Aivars Aboltins, Hryhorij Kaletnik, Zinoviy Ruzhlyo STUDY ON POWER PARAMETERS OF MOVING GRAIN MATERIALS WITH PNEUMATIC SCREW CONVEYOR.....	576
Viktor Trokhaniak, Semjons Ivanovs, Yuri Nasieka, Oleh Chernysh, Aivars Aboltins, Yevhen Ihnatiev, Oleksandr Synyavskiy USAGE OF CFD FOR RESEARCH ON LATERAL VENTILATION SYSTEM IN POULTRY HOUSE	582
Valerii Adamchuk, Volodymyr Bulgakov, Semjons Ivanovs, Adolfs Rucins, Ivan Beloev, Volodymyr Kuvachov, Viktor Kaminskii, Oleh Chernysh STUDY OF PASSIVE STEERING OF WIDE SPAN VEHICLES WITH POWER-DRIVEN STEERING METHOD.....	588
Volodymyr Kuzmenko, Viacheslav Bratishko, Sergiy Subota, Oleksandr Kholodiuk INFLUENCE OF MOISTURE ON PARTICLE SIZE OF PLANT RAW MATERIALS AFTER GRINDING.....	596

Vilis Dubrovskis, Dagnis Dubrovskis BIOGAS PRODUCTION FROM FRESH AND OLD SAWDUST LITTER WITH CHICKEN MANURE.....	602
Vilis Dubrovskis, Dagnis Dubrovskis METHANE PRODUCTION FROM BRIQUETTES OF BIRCH SAWDUST	608
Izabela Adamickova, Marcela Hallova, Peter Bielik, Natalia Turcekova BUSINESS DIGITIZATION IN SLOVAKIA AND ITS IMPACT ON RURAL DEVELOPMENT	614
Pavels Tihomirovs, Aleksandrs Korjakins PORE-FORMING ADDITIVES IN GLASS-CLAY COMPOSITION	620
Maris Mangalis, Juris Priekulis, Mara Mangale STUDIES OF PERFORMANCE PARAMETERS IN MILKING ROBOTS AFTER SOFTWARE IMPROVEMENT	624
Adolfs Rucins, Dainis Viesturs, Maris Narvils, Semjons Ivanovs, Agris Auce USE OF ACCUMULATED SOLAR THERMAL ENERGY IN GREENHOUSE FOR EXTENDING VEGETATION PERIOD OF CROP PLANTS	628
Agris Auce, Indulis Arnis Horns, Semjons Ivanovs, Aivars Jermuss, Ugis Grinbergs, Adolfs Rucins DEVELOPMENT OF TECHNOLOGICAL PROCESS SOLUTIONS IN MODULAR SYSTEM OF SOLAR ELECTRICITY AND HEAT SUPPLY FOR GREENHOUSES.....	636
Dainis Berjoza, Inara Jurgena, Janis Laceklis-Bertmanis ENERGY BALANCE ANALYSIS OF SOLAR-POWERED CATAMARAN.....	644
Stanislav Nikolaenko, Oksana Bulgakova, Lesya Zbaravska, Adolfs Rucins, Ilmars Dukulis RESEARCH ON INTER-DISCIPLINARY LINKS TRAINING ENGINEERS-DESIGNERS FOR AGRICULTURAL MACHINERY AT AGRICULTURAL UNIVERSITIES	651
Oksana Bulgakova, Lesya Zbaravska, Ilmars Dukulis, Adolfs Rucins CONTENT OF PROFESSIONALLY ORIENTED TRAINING IN COURSE OF PHYSICS FOR STUDENTS OF AGRICULTURAL ENGINEERING SPECIALTIES	661
Stanislav Nikolaenko, Oksana Bulgakova, Iryna Yasinetska, Lesya Zbaravska, Ilmars Dukulis, Nataliia Shynkaruk, Adolfs Rucins PROGRAMMING OF PEDAGOGICAL TECHNOLOGY FOR FORMATION OF PROFESSIONAL COMPETENCE STUDYING SPECIAL DISCIPLINES IN AGRICULTURAL ENGINEERING SCIENCES	667
Oksana Bulgakova, Lesya Zbaravska, Sergii Hrushetskyi, Ilmars Dukulis FORMATION OF INFORMATION-COMMUNICATION COMPETENCE OF FUTURE AGRICULTURAL ENGINEERING SPECIALISTS AT AGRICULTURAL INSTITUTIONS OF HIGHER EDUCATION	674
Stanislav Nikolaenko, Oksana Bulgakova, Iryna Yasinetska, Lesya Zbaravska, Ilmars Dukulis DEVELOPMENT OF INTEGRATIVE-TRANSPARENT EDUCATIONAL ENVIRONMENT TRAINING ENGINEERS OF AGRICULTURAL PRODUCTION	683
Oksana Bulgakova, Lesya Zbaravska, Sergii Slobodian, Nataliia Shynkaruk, Ilmars Dukulis MODERNIZATION OF CONTENT OF LECTURE COURSE IN PHYSICS TO TRAIN FUTURE AGRICULTURAL ENGINEERS	691
Sergejs Kodors, Imants Zarembo, Ginta Majore, Edgars Rubauskis, Lienite Litavniece DIGITAL TWIN MODELLING FOR SMART FRUIT-GROWING: ECO-CYBER- PHYSICAL SYSTEM 4+1 ARCHITECTURE.....	700
Zlatin Georgiev STUDY OF VIBRATIONAL BEHAVIOUR OF SHOCK ABSORBER IN HARSHNESS FREQUENCY RANGE 20-100 HZ	707
Ivan Revenko, Vasyl Khmelovskyi, Yulii Revenko, Victor Rebenko, Svitlana Potapova JUSTIFICATION OF PARAMETERS AFFECTING INCREASE OF HAMMER CRUSHER PRODUCTIVITY	714
Volodymyr Bulgakov, Oleksii Kutsenko, Anastasiya Kutsenko, Aivars Aboltins, Semjons Ivanovs REINFORCEMENT IMPACT ON STATE OF CRACKS IN CONCRETE SLABS	721

Ilgar Jafarli, Umesh-Haribhai Vavaliya MECHANICAL BEHAVIOR OF I-BEAMS REINFORCED BY UNIDIRECTIONAL CARBON FIBRE, UNIDIRECTIONAL GLASS FIBER AND CARBON FIBRE LAMINATES	729
Oksana Pavlenko, Andrejs Matvejevs COMPARISON OF LINEAR AND NONLINEAR MODELS FOR FORECASTING OF FOOD COMMODITY PRICES IN LATVIA	735
Manfred Sneps-Sneppe USE OF CRITERIA NPV AND IRR FOR CHOOSING AMONG INVESTMENT PROJECTS	745
Sintija Ozolina APPLICATION OF FURCELLARIA LUMBRICALIS IN DEVELOPMENT OF BIODEGRADABLE SEEDLING POTS	751
Alina Girbaciuc, Cristian Girbaciuc, Camelia Stefanescu, Adia Grozav SOLUTIONS AND CHALLENGES FOR SUSTAINABLE INTEGRATED MANAGEMENT OF STORMWATER IN URBANIZED AREAS OF ROMANIA.....	757
Lauris Plume, Imants Plume ANALYSIS OF FACTORS INFLUENCING ENERGY EFFICIENCY OF BIOGAS PLANTS	764
Radovan Madlenak, Lucia Madlenakova, Peter Szatmari, Gyoergy Ivan Neszmelyi DISTRIBUTION NETWORKS IN NATIONAL AND CROSSBORDER E-COMMERCE	770
Radovan Madlenak, Lucia Madlenakova, Tamas Toth, Gyoergy Ivan Neszmelyi GLOBAL POSTAL E-COMMERCE DELIVERY NETWORK - TRADE SOLUTION FOR SMALL AND MEDIUM ENTERPRISES TO ENTER GLOBAL MARKET	777
Armands Veveris CHANGES IN USE OF PASSENGER RAILWAY TRANSPORT DUE TO COVID-19 PANDEMIC AND EXPECTED PROSPECTS IN LATVIA	784
Sai-Pavan Kanukuntla, Jaymin-Vrajlal Sanchaniya, Uchit Kardani, Vitalijs Beresnevics NUMERICAL SIMULATION OF POLYMERIC COMPOSITE NANOFIBER MAT	790
Harijs Kalis, Ilmars Kangro, Aivars Aboltins NUMERICAL ANALYSIS FOR SYSTEM OF PARABOLIC EQUATIONS WITH PERIODIC FUNCTIONS	796
Tatjana Sinkus, Inese Ozola INTEGRATING INTERCULTURAL DIMENSION IN ESP COURSE FOR UNDERGRADUATE IT STUDENTS	810
Janis Kramens, Edgars Vigants, Sai-Pavan Kanukuntla, Dmitri Goljandin EFFICIENT ENERGY RECOVERY FROM TEXTILE WASTE AND BIOMASS MIXTURE.....	817
Volodymyr Bulgakov, Semjons Ivanovs, Hristo Beloev, Oleksandra Trokhaniak, Mykola Klendii, Anatoliy Bondarchuk, Adolfs Rucins SYNTHESIS OF TILLAGE MACHINES AND EXPERIMENTAL RESEARCH ON AGRO TECHNOLOGICAL INDICATORS FOR TILLAGE QUALITY	826
Volodymyr Bulgakov, Semjons Ivanovs, Valerii Adamchuk, Volodymyr Nadykto, Volodymyr Kyurchev, Vadym Yaremenko, Liudmyla Krasiuk TREATMENT QUALITY ASSESSMENT OF SUNFLOWER INTER-ROW WIDTHS WITH ASYMMETRIC JOINING OF CULTIVATOR TO TRACTOR.....	834
Volodymyr Bulgakov, Aivars Aboltins, Viktor Trokhaniak, Hristo Beloev, Oleksandra Trokhaniak, Ivan Holovach, Oleksandr Synyavskiy RESEARCH ON GAS DYNAMIC FLOWS IN POULTRY HOUSE LATERAL VENTILATION SYSTEM USING CFD MODELLING	842
Viktorija Vendina, Austra Zusevica, Dagnija Lazdina REVIEW OF DIFFERENT TYPES OF FERTILIZERS FOR WILLOW PLANTATIONS	849

Sebastian Solcansky, Juraj Gerlici, Vadym Ishchuk, Denis Molnar SIMULATION OF FREIGHT WAGON RUNNING ON TEST TRACK AT DIFFERENT SPEEDS AND LOAD DISTRIBUTION FROM POINT OF VIEW OF DERAILMENT SAFETY AND LATERAL FORCES	857
Alberts Auzins, Ieva Leimane, Silvija Dreijere MODELLING OF FARM-GATE NITROGEN BALANCE IN DAIRY FARMING - CASE STUDY OF LATVIA	864
Gabriel Gheorghe, Daniel Lates, Claudiu Oprea, Carmen Baltatu STRUCTURAL AND MODAL ANALYSIS IN SOLIDWORKS OF AGRICULTURAL PLOW TO CHOOSE VIBRATION SYSTEM AT MOLDBOARD.....	872
Evgeni Sokolov, Evgeni Dimitrov, Lilo Kunchev EXPERIMENTAL STUDY ON TRANSPORT MODES OF HEAVY TRUCKS	879
Vladislav Zavadskiy, Gita Revalde CLEAN ENERGY AND HYDROGEN PERSPECTIVES IN RURAL REGIONS OF KAZAKHSTAN	888
Tetiana Tkachenko, Viktor Mileikovskiy, Ihor Satin, Adam Ujma AGROCENOSSES AIR IMPROVEMENT FOR LONGER AND HEALTHIER PEOPLE LIFE.....	895
Daria Vakulenko, Viktor Mileikovskiy, Tetiana Tkachenko, Adam Ujma, Viktoriia Konovaliuk ANALYSIS OF CRITICAL RADIUS OF INSULATION FOR HORIZONTAL PIPES.....	902
Dace Brizga, Olga Miezite, Vija Ozolina, Linards Sisenis IMPROVEMENT OF LABOUR PROTECTION SPECIALISTS COMPETENCE ASSESSMENT OF COGNITIVE ERGONOMIC ASPECTS IN JSC LATVIAN STATE FORESTS (LVM) NURSERIES	908
Ana Zaica, Radu Ciuperca, Alexandru Zaica RESEARCH ON PROCESS OF CUTTING SUPERFICIAL ROOTS IN TREES.....	915
Istvan Grajczjar, Krisztina Schottner, Janos Harskuti WELLBEING ELEMENTS IN COMPANIES LOCATED IN DIFFERENT SETTLEMENT TYPES IN HUNGARY	925
Timur Valiev, Viktor Polishchuk RESEARCH ON YIELD OF BIOGAS DURING METHANE FERMENTATION OF COW MANURE WITH ADDITION OF GRANULATED STRAW WITH SLAKED LIME	931
Santa Bormane, Biruta Sloka, Daina Skiltere SUSTAINABLE CONSUMPTION AND WASTE MANAGEMENT.....	937
Svetla Stoilova MULTI-CRITERIA APPROACHES FOR CHOOSING INTERMODAL TECHNOLOGY FOR CONTAINER TRANSPORTATION	943
Malgorzata Ulewicz, Wieslaw Liszewski PROBLEM OF UTILIZATION OF ASBESTOS-CEMENT SHEETS IN POLAND.....	951
Yaroslav Blikharskyy, Jacek Selejdak, Roman Khmil, Zinoviy Blikharskyy RESEARCH ON CONCRETE PROPERTIES BY DIC METHOD	958
Ilze Janpavle, Una Ile ACCESSIBILITY OF ACTIVE LEISURE AREAS AND SOCIAL INCLUSION IN CONTEXT OF URBAN PLANNING.....	964
Zheng Bin Pan, Yun Xiang Lu, Xue Rui Yang RESEARCH ON APPLICATION OF VISCOUS DAMPING TECHNOLOGY IN REINFORCEMENT AND RECONSTRUCTION OF EXISTING BUILDINGS.....	974
Ming Wang, Yonghao Zeng, Ying Chen, Shiyi Zhang CRYSTAL STRUCTURE EFFECT ON METALLIC MECHANICAL PROPERTIES OF UNDER TENSION STRESS: MOLECULAR DYNAMICS STUDY	980
Chaocheng Yu, Zhiguang Zhao, Xiaoling Qu, Sanyin Zhao INFLUENCE OF POLYMER ON MECHANICAL STRENGTH AND STRUCTURE OF MORTAR.....	985

Andrzej Zyromski, Marcin Wdowikowski, Bartosz Kazmierczak ESTIMATION OF EVAPOTRANSPIRATION EMPIRICAL COEFFICIENTS OF SCOTS PINE (<i>PINUS SYLVESTRIS</i>) UNDER CLIMATE CHANGE CONDITIONS.....	991
Xiaoling Qu, Zhiguang Zhao, Chaocheng Yu, Sanyin Zhao PREPARATION OF HIGH-EFFICIENCY FOAMING AGENT AND ITS APPLICATION IN FOAMED CONCRETE.....	998
Egidijus Sarauskis, Marius Kazlauskas, Indre Bruciene, Vilma Naujokiene, Sidona Buragiene, Kestutis Romaneckas, Dainius Steponavicius, Abdul Mounem Mouazen ASSESSMENT OF ENERGY AND ENVIRONMENTAL IMPACT IN PRECISION SEEDING TECHNOLOGICAL PROCESSES	1005
Tetiana Tkachenko, Viktor Mileikovskiy, Anna Moskvitina, Iryna Peftieva, Viktoriia Konovaliuk, Adam Ujma PROBLEMS OF STANDARDISING ILLUMINATION FOR PLANTS IN GREENHOUSES AND GREEN STRUCTURES	1011
Ulyana Nedilska, Serhii Yermakov, Anatolii Rud, Oleg Kucher, Oleksandr Dumanskyi BIOENERGETIC EVALUATION OF MISCANTHUS GIANT PRODUCTIVITY IN CONDITIONS OF WESTERN FOREST-STEPPE OF UKRAINE FOR USE AS SOLID FUEL.....	1017
Jorge Los-Santos, Esteban Fraile, Javier Ferreira STRUCTURAL AND ENVIRONMENTAL ANALYSIS OF REINFORCED CONCRETE STRUCTURE.....	1026
Irita Slavinska, Vladimirs Jemeljanovs, Maris Ziemelis EFFICIENCY OF AUTONOMOUS SMOKE DETECTORS DEPENDING ON OPERATION TIME PERIOD	1031
Weixing Hong, Hanxi Li, Yanliang Xu, Chuanyue Zhang, Jiawei Li, Mohammad Noori, Wael A. Altabay DAMAGE IDENTIFICATION IN BRIDGES BASED ON WPCD TRANSFORM	1039
Chuanyue Zhang, Yanliang Xu, Ahmed Silik, Hanxi Li, Mohammad Noori, Wael A. Altabay ANALYSIS OF INSTANTANEOUS FREQUENCY FOR STRUCTURE CONDITION TRACKING USING TIME-FREQUENCY REPRESENTATION: COMPARATIVE STUDY	1045
Zhang Ying, Zhang Zixuan RISK ANALYSIS OF FOREST FIRES IN CHINA BASED ON INFORMATION DIFFUSION THEORY	1052
Ahmad Mubarak Aliyu, Adamu Kabiru INFLUENCE OF INFILL WALL IN RC FRAMES	1062
Eve Aruvee, Anna Vintere OVERCOMING MATHEMATICAL ANXIETY TO PROMOTE PROGRESS IN MATHEMATICS DURING UNDERGRADUATE ENGINEERING STUDIES AT UNIVERSITY	1069
Regina Veckalne, Tatjana Tambovceva UNPACKING URBAN: TOWARDS COMMON DEFINITION.....	1075
Guoqiang Cao, Bo Zhang, Gang Li, Wenya Peng EFFECT OF SHELL TEMPERATURE ON SOLIDIFICATION ORGANIZATION OF EQUIAXED CRYSTAL BLADE	1083
Guoqiang Cao, Yuqiao Shen, Gang Li, Wenya Peng EFFECT OF SHELL TEMPERATURE IN THERMAL CONTROL SOLIDIFICATION PROCESS ON MICROSTRUCTURE AND STRESS RUPTURE PROPERTY OF CAST EQUIAXED SUPERALLOY	1089
Juris Hazners, Andra Zvirbule ESTIMATION OF IMPACT OF PARTICIPATION IN PUBLIC GREEN PROCUREMENT OF FOOD ON FARM NUMBERS IN RURAL LATVIAN COUNTIES	1095
Aivars Aboltins, Janis Palabinskis, Roberts Vilis Jansons USE OF OZONE IN OATS DRYING.....	1101

REVIEWERS

Atanas Zdravkov Atanasov, Aivars Aboltins, Andris Chate, Maryna Bordun, Baiba Briede, Gabriela Civeira, Svetlana Atslega, Volodymyr Bulgakov, Jorge Raúl Barral, Olesia Barbaniuk, Dzintra Atstāja, Yevhenii Aftandiliants, Adewale George Adeniyi, Jacek Caban, Santa Bormane, Olivia Chirobocea-Tudor, Viktor Baranovsky, Dalius Butkauskas, Ferenc Bakó, Izabella Mária Bakos, Nataliia Bakhmat, Asen Asenov, Rosa Arce-Ruiz, Andrii Babii, Jonas Čėsna, Conti Conti, Irina Arhipova, Anita Auziņa, Dainis Berjoza, Amanda Akram, Astra Auzina-Emsina, Ján Dižo, Nikolay Dolchinkov, Nataliia Frasyniuk, Vija Dislere, Vasyl Dmytriv, Liliya Degola, Maria Fekete-Farkas, Ivan Holovach, Szymon Głowacki, Dace Grauda, Andrii Galkin, Xiaotong Guo, Juraj Gerlici, Antons Gajevskis, Iryna Hren, Taras Hutsol, Liudmyla Hunko, Martin Hubbe, Ion V. Ion, Inga Grīnfelde, Evija Kopeika, Pavel Kic, Inga Ļašenko, Sandra Jekabsone, Harijs Kalis, Jarosław Kinal, Davut Karayel, Andrejs Koliškis, Ilmārs Kangro, Oleksandr Kravchenko, Vladimír Klapita, Kārlis Ketners, Aivars Kaķītis, Remo Merijs-Meri, Kęstutis Navickas, Viktor Melnyk, Volodymyr Nadykto, Gabriel Matache Mihai, Inese Ozola, Vitālijs Osadčuks, Kristaps Makovskis, Maris Mangalis, Rafał Melnik, Henrietta Nagy, Oskars Onževs, Ramūnas Mioldažys, Abu Bakar Mohd Hadzley, Oleksandr Naumenko, Renata Macaitienė, Zhang Mai, Wan Mazlina Wan Mohamed, Bing Ouyang, Sunil Warang Omkar, Jelena Pundure, Jānis Palabinskis, Alfredas Rimkus, Ilmars Preikss, Dina Popluga, Jozef Rédl, Imants Plūme, Nikolay Pavlov, Joanna A. Pawłowicz, Dariusz Szpica, Thomas Schindler, Ruslans Šmigins, Aldis Pecka, Mareks Smits, Mirosław Rucki, Stanislav Semenov, Aalireza Saidi, Ziedonis Sarmulis, Muhammad Rizwan Riaz, Mária Polorecká, Katarína Petřlová, Andrea Pezzuolo, Adolfs Rucins, Roman Rogatynskiy, Valentyna Spivachuk, Mura Petru-Ovidiu, Manfred Sneps-Sneppe, Sara Pettinari, Modrīte Pelše, Indulis Straume, Uldis Strautiņš, Egidijus Šarauskis, Kristine Vugule, Anna Vintere, Tatjana Tambovceva, Zigrīda Vinčela, György Vida, Tamás Toth, Yucel Tekin, Orest Voznyak, Inta Volodko, Zhao Yunsong, Zane Vincevica-Gaile, Tomasz Trzepieciński, Tomasz Wróbel, Daina Vasilevska, Edmunds Teirumnieks, Haibin Wang, Laszlo Vasa, Andra Zvirbule, Aija Ziemeļniece, Uldis Žaimis, Mohamad Zaki Hassan, Aleksejs Zacepins, Sandija Zēverte-Rivža, Anda Zvaigzne, Erika Zubule, Wanha Zhang, Oskars Zaļkalns.

INFLUENCE OF MOISTURE ON PARTICLE SIZE OF PLANT RAW MATERIALS AFTER GRINDING

Volodymyr Kuzmenko¹, Viacheslav Bratishko², Sergiy Subota¹, Oleksandr Kholodiuk³

¹Institute of Mechanics and Automation of Agricultural Production of the National Academy of Agrarian Sciences of Ukraine, Ukraine; ²National University of Life and Environmental Sciences of Ukraine, Ukraine; ³Vinnitsia National Agrarian University, Ukraine
vfkuzmenko@ukr.net, vbratishko@nubip.edu.ua, tstimesg@ukr.net, holodyk76@ukr.net

Abstract. Stem plant materials, as a common lignocellulosic raw material, are widely used both in agro-industrial production and in biofuel technologies. One of the main technological operations when using stem plant materials is grinding. The performed studies are dedicated to determining the influence of raw material moisture on the efficiency of grinding plant materials such as wheat straw, rape straw and corn stalks. A hammer grate crusher was used for the research. The diameter of the rotor was 520 mm, the diameter of the sieve holes was 7.25 mm, and the frequency of rotation of the rotor was 1470 rpm. In the upper part of the rotor, four knives are installed on a disk with slots, which preliminarily destroy the raw materials. Raw materials obtained after grinding were analysed using a sieve classifier. Grinding quality was assessed by the weighted average particle size. Experiments were conducted with wheat straw, rape straw and corn stalks with moisture obtained during crop harvesting, as well as additionally dried. Each type of raw material had three levels of moisture, and the repetition of the experiments was threefold. The moisture limits for each crop were individual and ranged from 8 to 30%. When analysing the results of the experiment, mathematical dependencies were obtained that describe the change in the weighted average length of the crushed raw material in the form of linear functions. It was established that when grinding wheat straw, rape straw, and corn stalks with a hammer crusher, an increase in their moisture content within the range of 8-30% leads to an increase in the weighted average length of particles from 1.6 to 2.4 mm, and the coefficient of determination of linear models of the influence of moisture on the change in weighted average length is in the range of 0.68-0.96.

Keywords: grinding, moisture, plant materials, hammer crusher, particle length.

Introduction

Plant materials, in particular, stem materials, are widely used [1] as fodder, technological materials, raw materials in fuel technologies, etc. Considering the purpose, type, and parameters of the material [2; 3], the requirements for its grinding differ significantly. Thus, the requirements for stem fodder are established by standards [4-6], and their moisture content can vary from 17-20% (hay) to 70-78% (silage) and is determined by both zootechnical and technological requirements. The length of hay stalks is 100-140 mm, the length of particles in haylage reaches 50-80 mm, and in silage - 10-50 mm. Precision-cutting machines are used to meet such requirements. The design, for example, of a drum cutting device, providing high productivity, allows to adjust it to a given cutting length, depending on the type of materials. Hay can be harvested without grinding, or with cutting to ensure the manufacturability of raw materials during distribution. A biter-knife cutting device is used for this, which is installed in the transport channel of a baler or a pick-up cart.

Harvesting straw for bedding [7] is similar in terms of requirements for harvesting hay. It is prepared in a pressed form, and for better compaction, it is pre-cut using a biter-knife cutting device. If necessary, the final length of the straw particles is formed during their distribution into the stalls.

The use of plant materials in fuel technologies [8-10], both solid and those obtained by fermentation methods, is becoming widespread. As a solid biofuel, plant materials are used for burning and pressed into bales, rolls, or in the form of fuel pellets or briquettes. Shredding in this case takes place in two stages: preliminary cutting during pressing in the field and final one- or two-stage grinding before pressing. This is explained by the fact that the production of high-quality pellets [11; 12] imposes strict conditions on the grinding and moisture content of the raw materials. At the same time, the length of the particles should not exceed 2-3 mm, or even 0.5-2.8 mm [13], to ensure the density of the pellets and the smoothness of the pelleting process. Before the final grinding, the raw material is dried to the moisture set by the pelleting conditions. The use of rational parameters of the moisture of stem raw materials allows to ensure the quality indicators of the produced solid biofuels, reduces energy consumption during their production, increases the heat of combustion, and reduces the formation of harmful emissions into the atmosphere [14].

The use of plant raw materials in the technologies of liquid and gaseous biofuels, which involve subsequent fermentation [15], imposes no less strict requirements on the quality and degree of grinding of bio-raw materials but does not require strict compliance with the requirements regarding the moisture content of raw materials, as in the production of fuel pellets.

In the works that consider the processes of grinding and compaction of plant raw materials, the influence of moisture on the geometric parameters of the ground material is usually not investigated or is taken into account approximately by an empirical coefficient [14; 16].

Although there is a constant search for shredder designs [16] that can ensure the required productivity and the quality of grinding with lower energy consumption, the final grinding of plant raw materials in the mentioned technologies is carried out mainly by hammer crushers, which differ by the relatively high specific energy consumption of the grinding process. The humidity of the material being ground has a significant influence on the energy costs [17].

Thus, in the work [18], devoted to the study of the influence of the moisture of wheat straw on the specific energy consumption for its grinding, it was established that with fine grinding (up to 0.25-1.42 mm) the grinding process corresponds the Rittinger law, and the Rittinger constant has the power-law dependence on the biomass moisture.

At the same time, with high requirements for the quality of grinding, the importance of predicting the influence of the moisture content of the stem raw material on the weighted average length of the crushed particles when grinding with hammer sieve crushers is increasing.

Materials and methods

The purpose of the research was to experimentally determine the influence of the moisture content of plant raw materials on the quality of grinding with a hammer sieve crusher for the further use of raw materials in biofuel technologies.

The analysis of the research and publications was carried out using the monographic method. Research on the grinding process was carried out using the method of a one-factor experiment with the determination of the moisture content of raw materials immediately after grinding. The sizes of crushed raw materials were analysed by the sieve analysis using DSTU 4877:2007, DSTU EN 15149-1:2013 [19; 20]. Grinding quality was assessed by the weighted average particle size using statistical methods, and graphical and regression analyses.

A hammer sieve crusher was used for the research (Fig. 1). The diameter of the crusher rotor was 520 mm, the diameter of the sieve holes was 7.25 mm, and the rotor speed was 1470 rpm. A disk with four knives was installed on the rotor of the crusher to ensure preliminary grinding of raw materials.



Fig. 1. **Hammer grinder of plant raw materials (with the loading neck removed):**
1 – body; 2 – disk with slots; 3 – pre-grinding knife; 4 – package of hammers; 5 – sieve

The raw materials obtained after grinding were analysed using the sieve analysis. Grinding quality was assessed by the weighted average particle size L_{wal} (1), which was determined according to the dependence [20]:

$$L_{wal} = \frac{\sum_1^n (l_{i+1} - l_i) M_i}{2 \sum_1^n M_i}, \quad (1)$$

where: $l_1, l_2, \dots, l_i, l_{(i+1)}$ – sizes of the holes on the sieves, mm;
 M_i – mass of the i -th fraction, g;
 i – fraction number;
 n – number of fractions.

Experiments were conducted with wheat and rapeseed straw, and corn stalks with the moisture obtained during crop harvesting, as well as additionally dried. Each type of raw material had its own moisture range, wheat straw – 8.27%, 12.38%, 15.94%, rape stalks – 9.70%, 15.67%, 17.13%, corn stalks – 12.08%, 15.97%, 30.28%.

Statistical data processing was performed using Microsoft Excel. All experiments were performed in three repetitions. Based on the analysis of the experimental data, regression equations were obtained. The correspondence of the obtained models to the experimental data was evaluated by the coefficients of determination.

A typical set of flat sieves with round holes with a diameter of 10, 7, 5, 4, 3, 2, 1 mm, metal woven sieves with a cell size of 0.5, 0.25 mm, and a pallet were used for the analysis. The working height of the sieves after installing them in the block is 2.5 cm.

Results and discussion

During the research, some peculiarities were revealed. Since the raw material in the crusher passes through the sieve after grinding, a large amount of crushed raw material of the same size is formed. During dispersion in the classifier, such raw material, having reached the sieve, which it does not pass, overflows it. To avoid this phenomenon, according to the guidelines [11], the sample was divided into smaller samples (subsamples) before scattering. The latter together made up the mass of the entire sample. In addition to this phenomenon, thanks to its properties, the crushed raw material rolled into a ball, which contained particles that could pass through the sieve individually, as well as smaller particles (Fig. 2). During the scattering, the ball was divided by hand into separate parts, which were alternately sifted separately from each other.

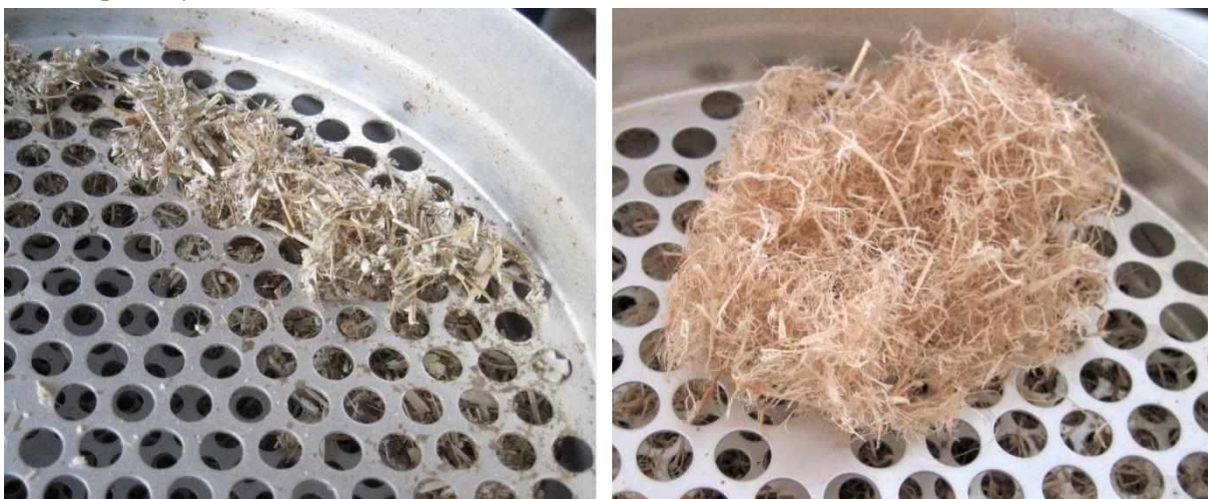


Fig. 2. Raw materials during sieving

After dispersing the crushed raw materials, we obtained fractions corresponding to the diameters of the sieves of the classifier (Fig. 3).

After weighing the obtained fractions, using equation (1), the weighted average length of the particles of the crushed raw material was determined for each sample of the corresponding moisture (Table 1).

The obtained results made it possible to plot the dependence of the change in the weighted average length of the particles of the crushed raw material on the moisture for wheat straw, rape stalks, and corn (Fig. 4).



Fig. 3. Samples of fractions of crushed wheat straw obtained on sieves with appropriate holes

Table 1

Results of experimental research

Plant raw materials	Moisture, %	Weighted average length of the particles, mm
Wheat straw	8.27	2.22
	12.38	2.21
	15.94	2.43
Rape straw	9.70	2.08
	15.67	2.18
	17.13	2.29
Corn stalks	12.08	1.69
	15.97	1.71
	30.28	2.34

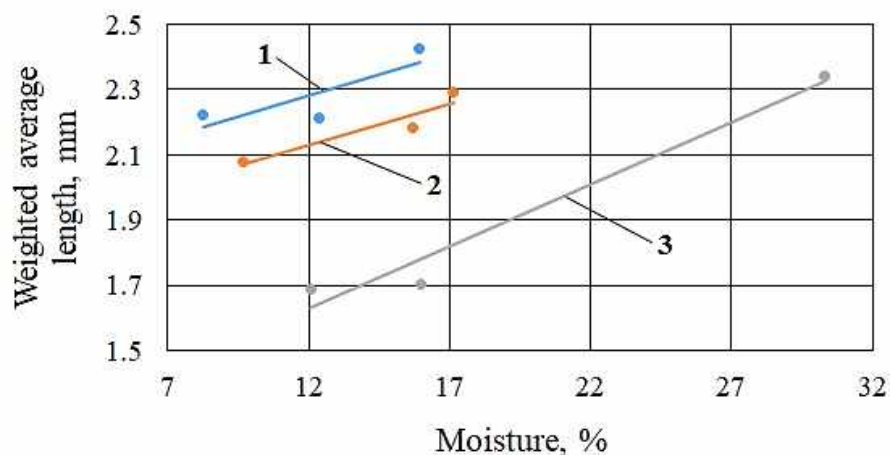


Fig. 4. Weighted average length of particles of crushed raw materials depending on moisture: 1 – wheat straw; 2 – rapeseed straw; 3 – corn stalks

Obviously, taking into account the measurement error, in order to obtain adequate mathematical models, it is necessary to conduct additional studies at different levels of raw material moisture.

However, the obtained data reflect a tendency to increase the weighted average length of the particles of crushed raw materials with increasing moisture content, which, with some approximation, can be represented by mathematical dependencies of the form (2-4):

- for wheat straw –

$$L_1 = 0.0261 W + 1.9689, \quad (2)$$

- for rapeseed straw –

$$L_2 = 0.0253 W + 1.8257, \quad (3)$$

- for corn stalks –

$$L_3 = 0.0381 W + 1.1713, \quad (4)$$

where L_1, L_2, L_3 – weighted average length of wheat and rapeseed straw and corn stalks, respectively, mm;
 W – raw material moisture, %.

The coefficients of determination for dependencies (2-4) were 0.6837, 0.8864, and 0.9671, respectively.

As it can be seen from Fig. 4, with increasing moisture, there is a tendency to increase the weighted average length of the particles of crushed plant material. The tangent of the angle of inclination of the graphs of linear dependencies describing the change in the average weighted length of grinding of different types of raw materials to the abscissa axis is 0.027 mm/% for wheat straw, 0.028 mm/% for rapeseed straw and 0.036 mm/% for corn stalks. Taking into account the studied moisture ranges, the difference can be explained by the fact that during grinding drier raw materials are destroyed with formation of a larger number of small particles.

Conclusions

1. It was established that the influence of moisture on the weighted average length of particles of crushed plant mass can be described by linear dependencies.
2. With increasing moisture, there is a tendency to increase the weighted average length of particles of crushed plant material when it is crushed by hammer crushers.
3. For the studied moisture range, the intensity of change in the weighted average particle length of the crushed raw material depending on its moisture content is 0.027 mm/% for wheat straw, 0.028 mm/% for rapeseed straw, and 0.036 mm/% for corn stalks.

Acknowledgements

This work was supported by the Ministry of Education and Science of Ukraine in the project “Cavitation processing of lignocellulosic raw materials in the production of second-generation biofuels” (financed by the European Union external aid instrument to fulfil Ukraine’s commitments in the European Union Framework Program for Scientific Research and Innovation “Horizon 2020”).

Author contributions

Conceptualization, V.K., V.B, S.S.; methodology, V.K. and S.S.; investigation, V.K., V.B., S.S. and O.K.; writing – original draft preparation, V.K., V.B.; writing – review and editing, V.K., V.B., S.S. and O.K.; project administration, V.B.; funding acquisition, V.B. All authors have read and agreed to the published version of the manuscript.

References

- [1] Lam P.S., Sokhansanj S., Bi X., Lim C.J., Naime L.J., Hoque M., Narayan S. Bulk density of wet and dry wheat straw and switchgrass particles. *Applied Engineering in Agriculture*, vol. 24 (3), 2008, pp. 351-358.

- [2] Bratishko V., Tkachenko T., Shulha S., Tigonova, O. Results of composition analysis of non-grain part of major field crops in Ukraine. *Engineering for Rural Development*, vol. 20, 2021, pp. 584-588.
- [3] Zhang X., Wang Z., Cong L., Nie S., Li J. Effects of fiber content and size on the mechanical properties of wheat Straw/Recycled polyethylene composites. *Journal of Polymers and the Environment*, vol. 28 (7), 2020, pp. 1833-1840.
- [4] DSTU standard 4782:2007. "Silage from green plants. Specifications"
- [5] DSTU standard 4684:2006. "Soilage. Specifications"
- [6] DSTU standard 4674:2006. "Hay. Specifications"
- [7] Riggio S., Torrijos M., Debord R., Esposito G., van Hullebusch E.D., Steyer J.P., Escudie R. Mesophilic anaerobic digestion of several types of spent livestock bedding in a batch leach-bed reactor: Substrate characterization and process performance. *Waste Management*, vol. 59, 2017, pp. 129-139.
- [8] McKendry P. Energy production from biomass (part 2): Conversion technologies. *Bioresource Technology*, vol. 83(1), 2002, pp. 47-54.
- [9] Menon V., Rao M. Trends in bioconversion of lignocellulose: Biofuels, platform chemicals & biorefinery concept. *Progress in Energy and Combustion Science*, vol. 38(4), 2012, pp. 522-550.
- [10] Dmytriv V., Kochan R., Hornostai M., Bubela T., Yatsuk V. Modeling of methane-tank work with airlift immixture. *Surveying Geology and Mining Ecology Management, SGEM*, vol. 18 (4.1), 2018, pp. 477-482.
- [11] DSTU standard 8358:2015. "Fuel briquettes and pellets. Specifications. Fuel briquettes and pellets from wood raw materials"
- [12] Serrano C., Monedero E., Lapuerta M., Portero H. Effect of moisture content, particle size and pine addition on quality parameters of barley straw pellets. *Fuel Processing Technology*, vol. 92 (3), 2011, pp. 699-706.
- [13] Stelte W., Holm J.K., Sanadi A.R., Barsberg S., Ahrenfeldt J., Henriksen U.B. Fuel pellets from biomass: The importance of the pelletizing pressure and its dependency on the processing conditions. *Fuel*, vol. 90 (11), 2011, pp. 3285-3290.
- [14] Клименко В.В., Кравченко В.І., Боков В.М., Гуцул В.І. Технологічні основи виготовлення біопалива з рослинних відходів та їх композитів (Technological bases of production of biofuel from vegetable waste and its composites: monograph). Edited by V.V. Klymenko. Kropyvnytskyi: "Exclusive-System" PE, 2017. 162 p. ISBN 978-617-7079-53-7. (In Ukrainian).
- [15] Green E.M. Fermentative production of butanol - the industrial perspective. *Current Opinion in Biotechnology*, vol. 22 (3), 2011, pp. 337-343.
- [16] Bratishko V., Milko D., Kuzmenko V., Achkevych O. Results of experimental studies of stem raw material chopper. *Engineering for Rural Development*, vol. 20, 2021, pp. 797-803.
- [17] Коваленко І.В., Малиновський В.В. Основні процеси, машини та апарати хімічних виробництв (The main processes, machines and devices of chemical industries). Kyiv: Inres. Volya, 2005. 264 p. ISBN 966-8329-26-0. (In Ukrainian).
- [18] Kratky L., Zenkl K., Jirout T. The effect of moisture on specific energy demand for knife-milled wheat straw. *Chemical Engineering Transactions*, vol. 92, 2022, pp. 7-12.
- [19] DSTU EN standard 15149-1:2013 (EN 15149-1:2010, IDT). "Solid biofuel. Methods of determining the granulometric composition. Part 1. The method using a vibrating screen with openings of 1 mm or more"
- [20] DSTU standard 4877:2007. "Chopped stem fodders. Indicators of fractional composition and methods of determination"